

DESCRIPTION

PERFORMANCE TO:

CAN3-A440
ASTM E-283-73
ASTM E-547
ASTM E-330-70

FRAME DEPTH:

155.2mm (6")

ALUMINUM:

6063-T5 alloy and temper

ANODIZED:

Clear anodized
Champagne anodized
Light bronze anodized
Architectural bronze anodized
Black anodized

ARCHITECTURAL COATING:

P.P.G. duracron, duranar and
duranar XL paint

GLASS STOPS:

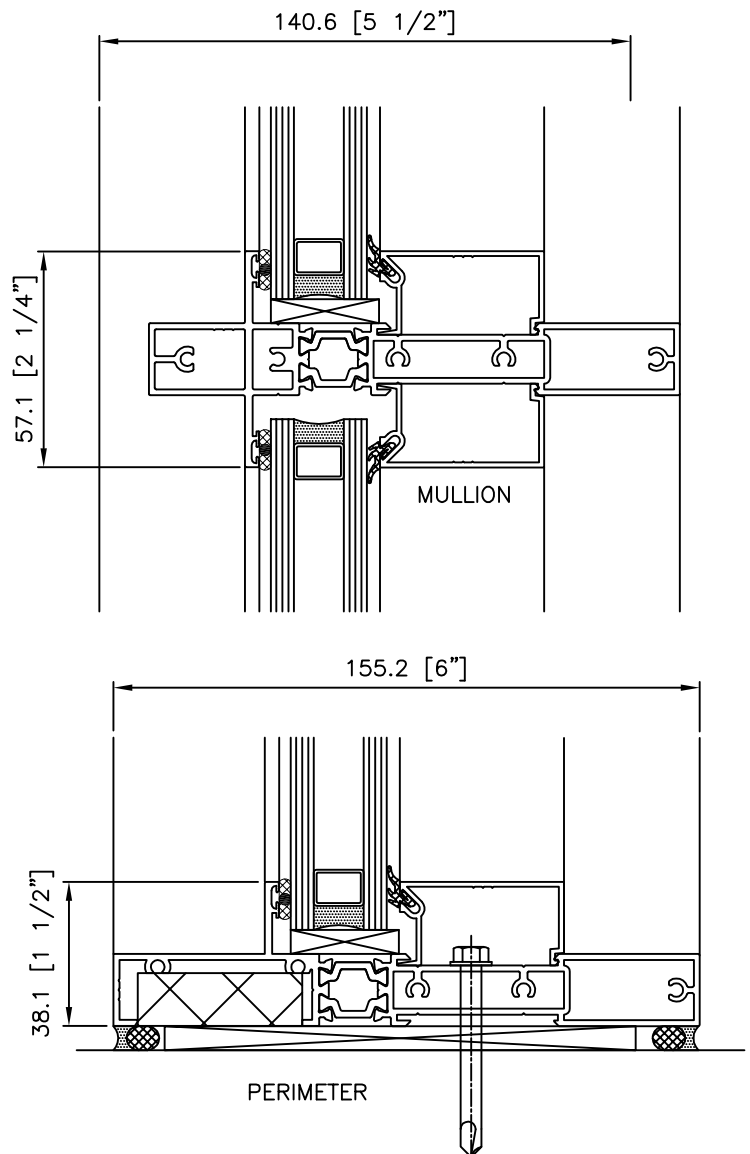
Square snap on type, glazed from the interior.

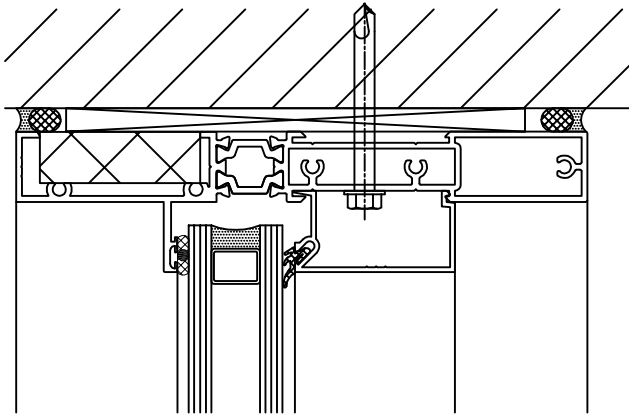
GLAZING:

Dry glazing retained by snap on glass stops at interior and glazing tape at the exterior.
25.4mm (1") overall sealed unit: 3.2mm (1/8") Polyshim tape @ exterior. Part V-1002 glazing spline @ interior.

CONSTRUCTION:

Fabricated from two aluminum extrusions assembled with a rigid vinyl thermal break, rolled and pressed to form an integral unit. Corners precisely cut and assembled to obtain strong, sealed hairline joints.

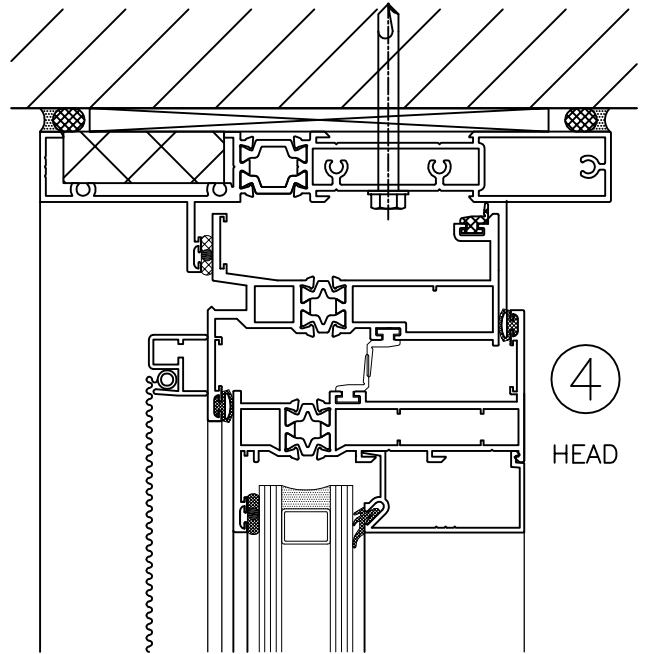




1

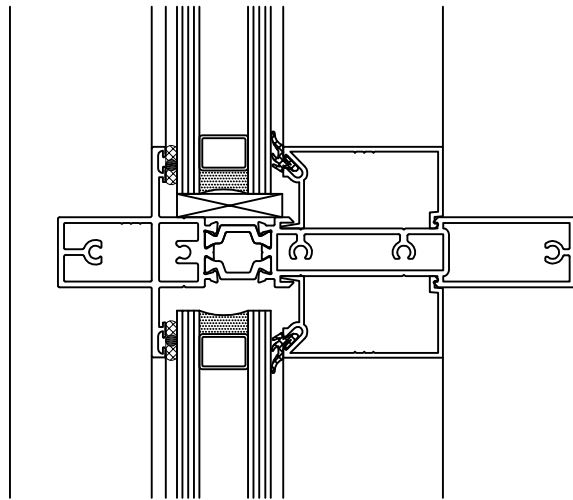
HEAD

FIXED



4

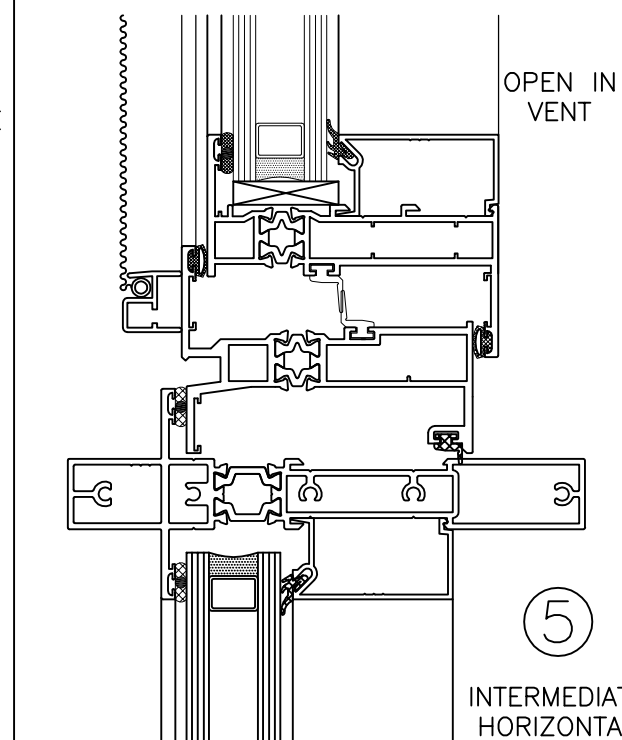
HEAD



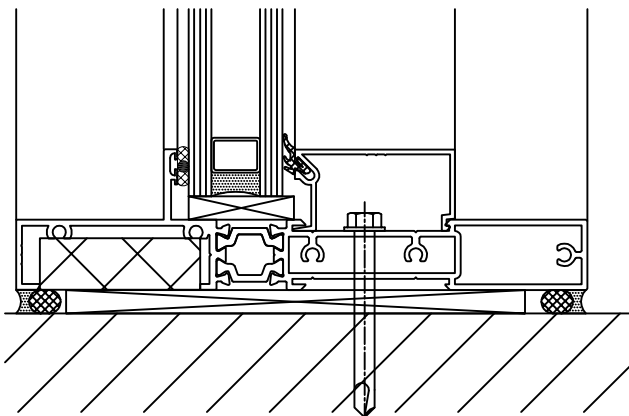
2

INTERMEDIATE
HORIZONTAL

FIXED



OPEN IN
VENT

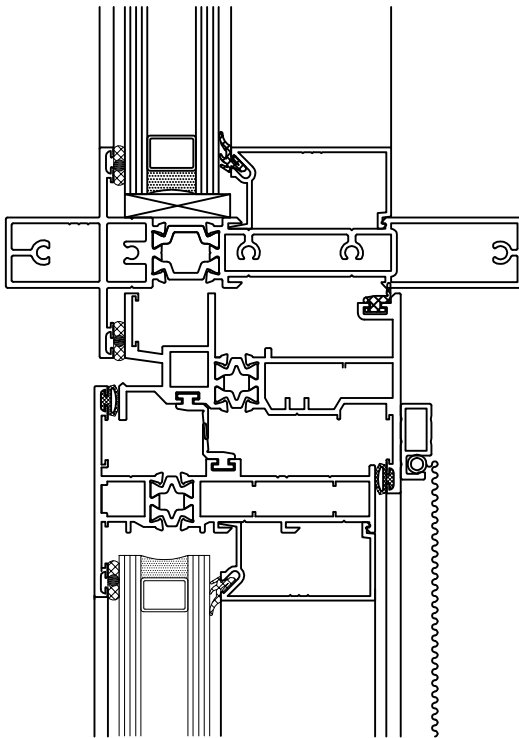


3

SILL

5

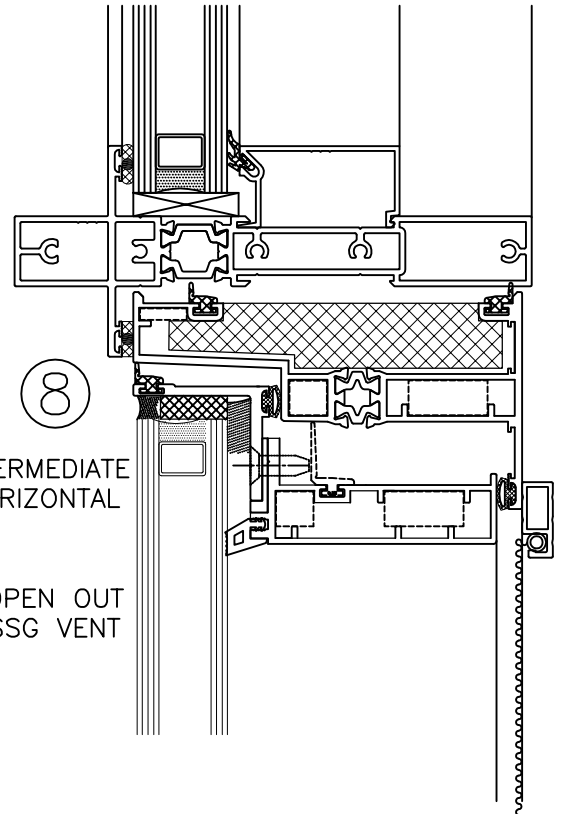
INTERMEDIATE
HORIZONTAL



6

INTERMEDIATE
HORIZONTAL

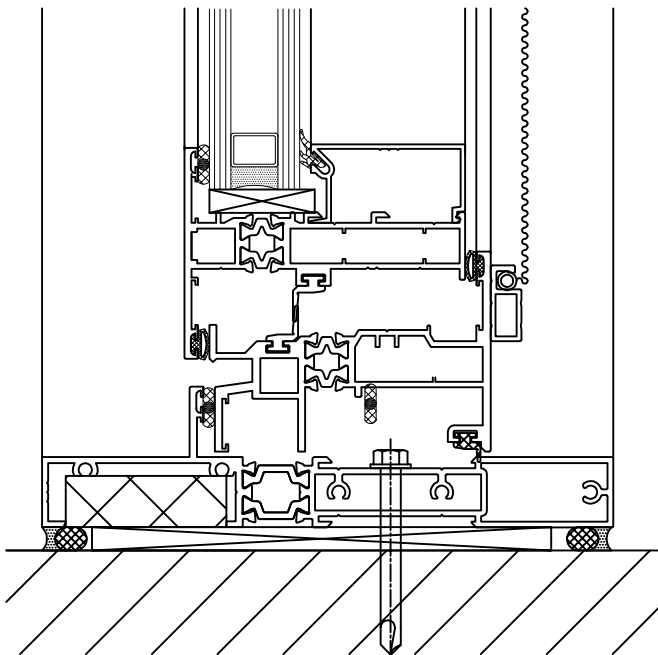
OPEN OUT
VENT



8

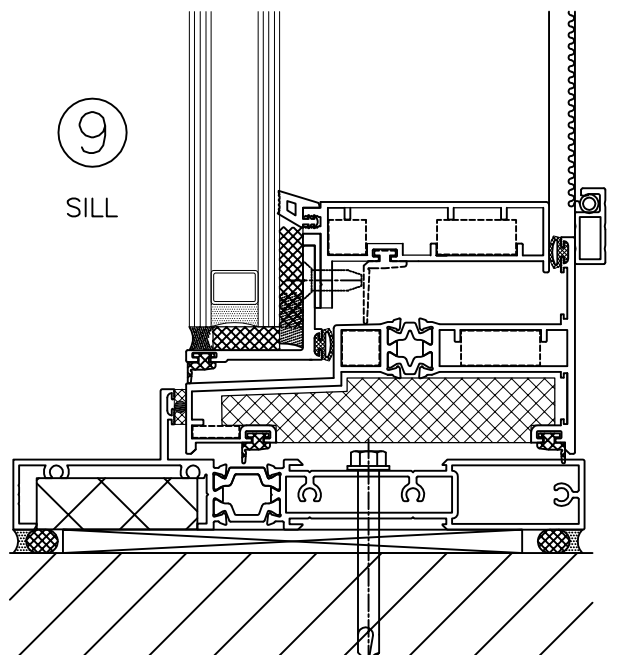
INTERMEDIATE
HORIZONTAL

OPEN OUT
SSG VENT



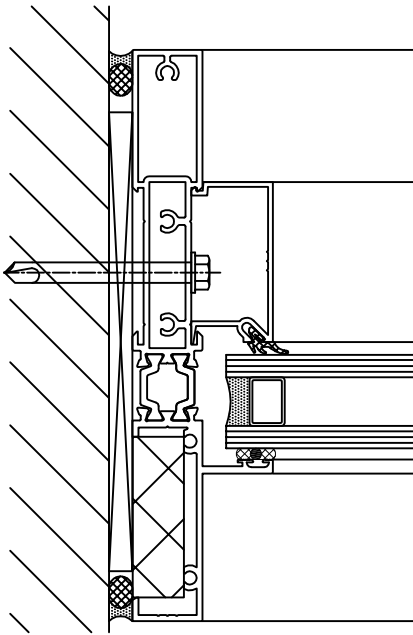
7

SILL



9

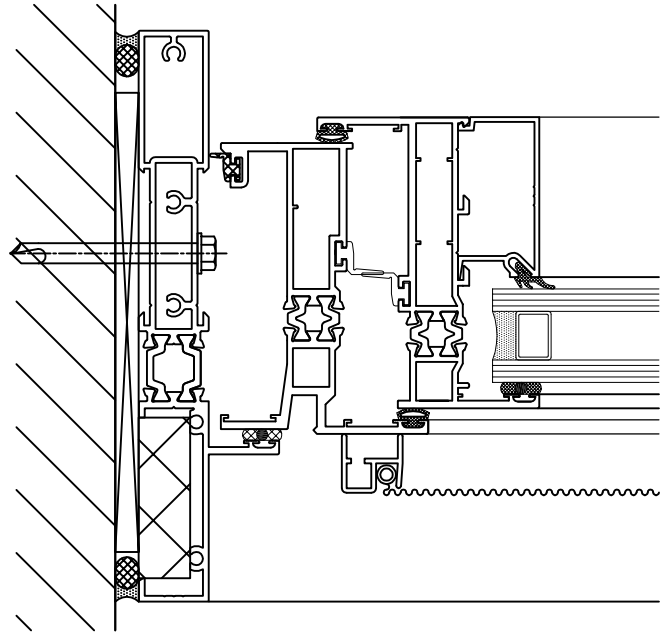
SILL



10

FIXED

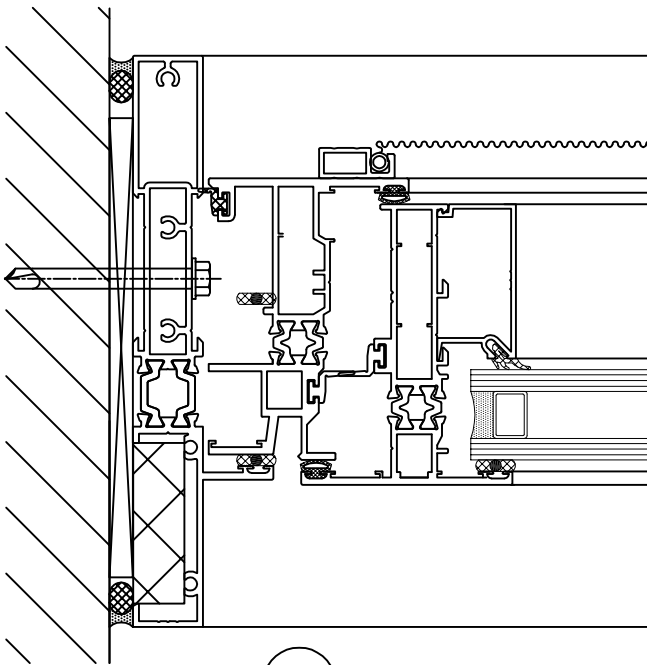
JAMB



11

OPEN IN
VENT

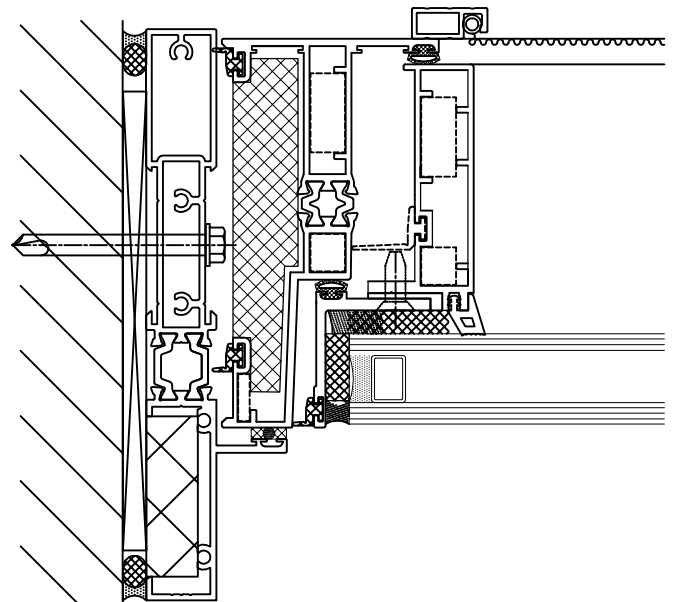
JAMB



12

OPEN OUT
VENT

JAMB



13

OPEN OUT
SSG VENT

JAMB