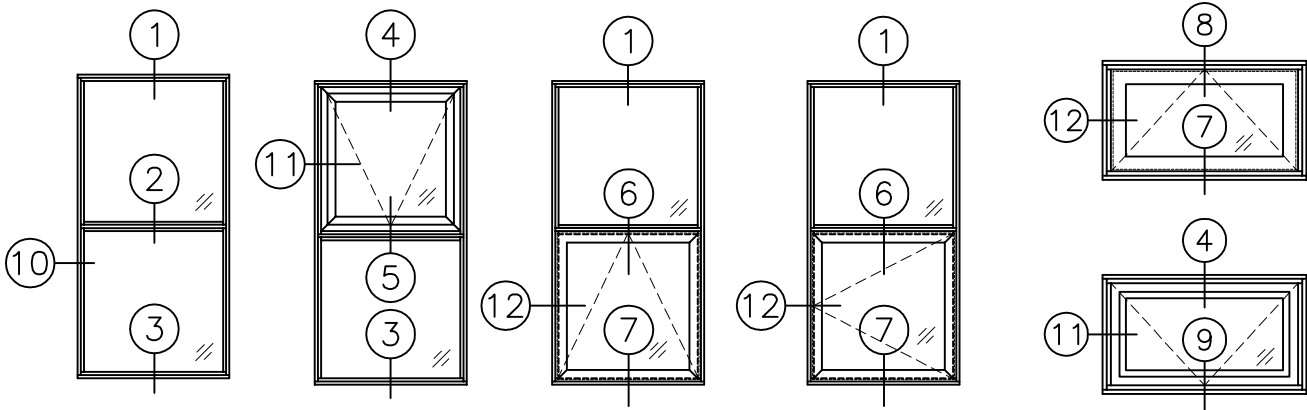




FIXED AND PROJECTED
HEAVY DUTY
INSULATED WINDOW

SERIES 80
127mm (5") DEEP



DESCRIPTION

PERFORMANCE TO:

- CAN3-A440
- ASTM E-283-73
- ASTM E-547
- ASTM E-330-70

FRAME DEPTH:

126.7mm (5")

ALUMINUM:

6063-T5 alloy and temper

ANODIZED:

- Clear anodized
- Champagne anodized
- Light bronze anodized
- Architectural bronze anodized
- Black anodized

ARCHITECTURAL COATING:

P.P.G. duracron, duranar and duranar XL paint

GLASS STOPS:

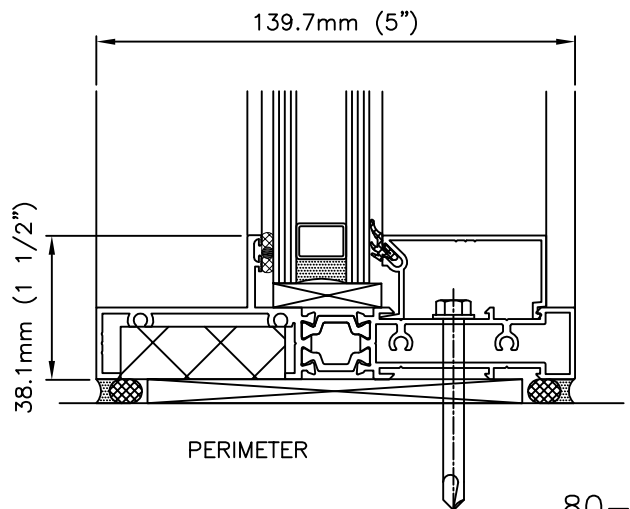
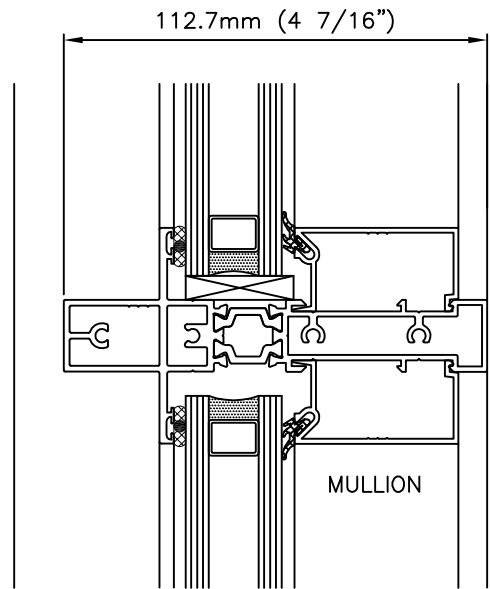
Square snap on type, glazed from the interior.

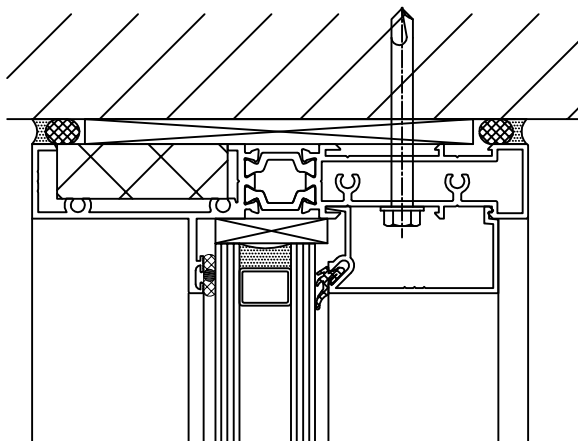
GLAZING:

Dry glazing retained by snap on glass stops at interior and glazing tape at the exterior.
25.4mm (1") overall sealed unit: 3.2mm (1/8") Polyshim tape @ exterior. Part V-1002 glazing spline @ interior.

CONSTRUCTION:

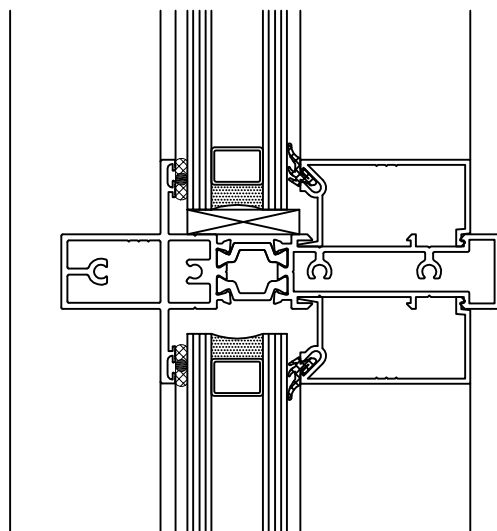
Fabricated from two aluminum extrusions assembled with a rigid vinyl thermal break, rolled and pressed to form an integral unit. Corners precisely cut and assembled to obtain strong, sealed hairline joints.





①
HEAD

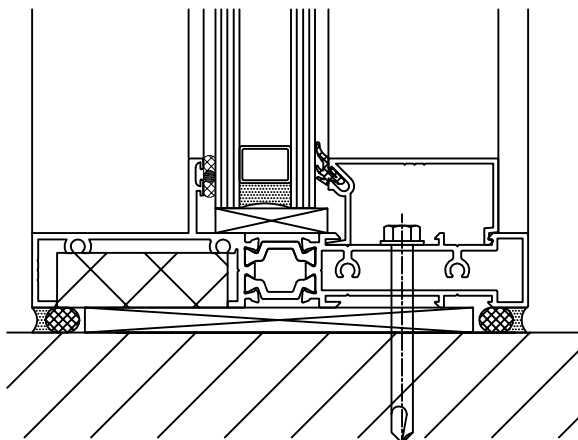
FIXED



②

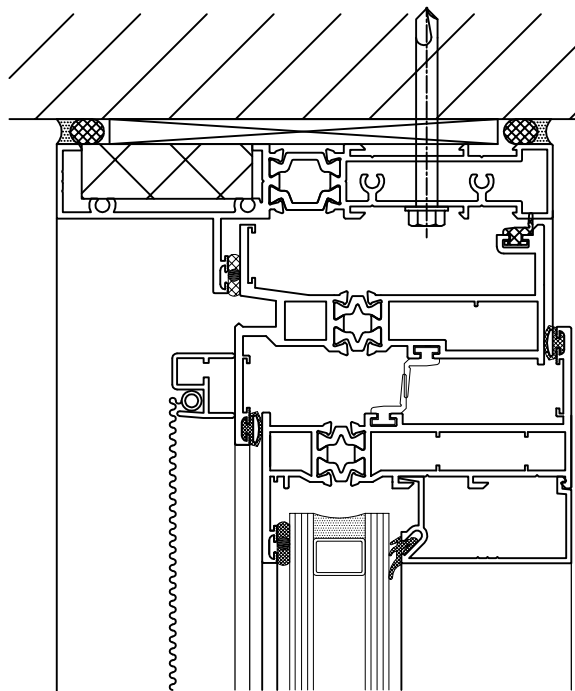
INTERMEDIATE
HORIZONTAL

FIXED



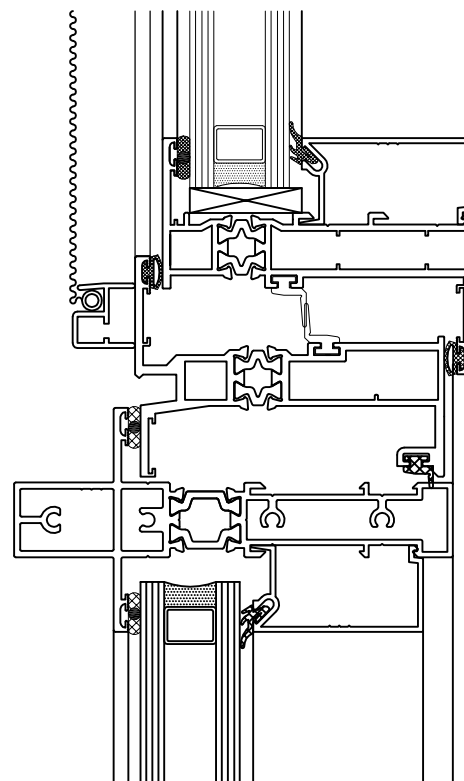
③

SILL



④

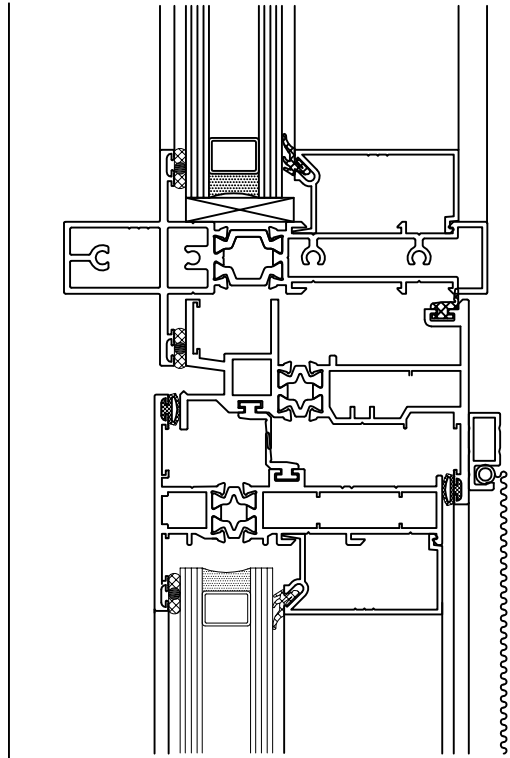
HEAD



OPEN IN
VENT

⑤

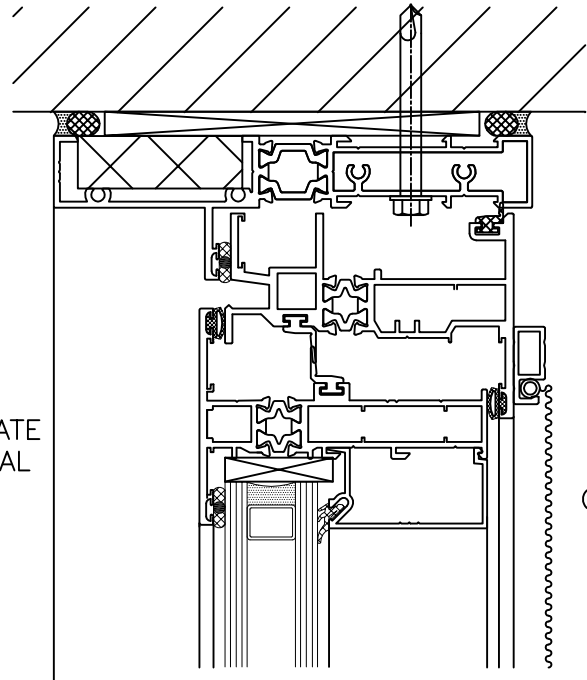
INTERMEDIATE
HORIZONTAL



6

INTERMEDIATE
HORIZONTAL

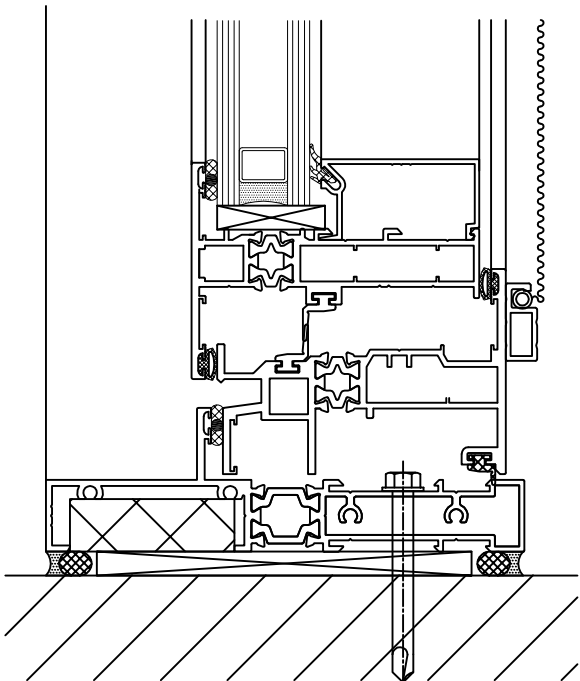
OPEN OUT
VENT



8

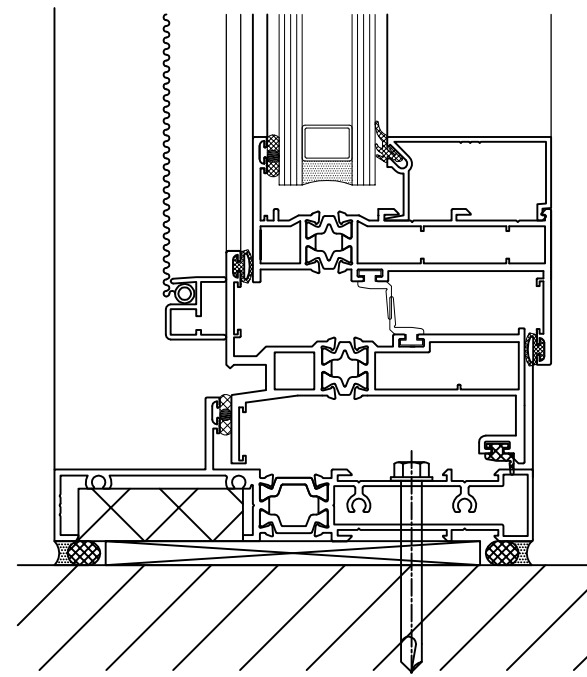
HEAD

OPEN OUT
VENT



7

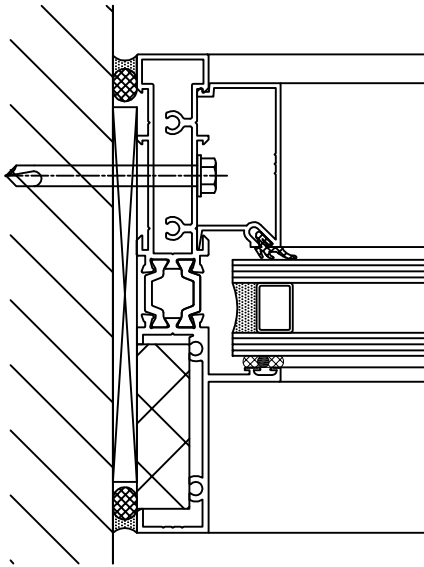
SILL



OPEN IN
VENT

9

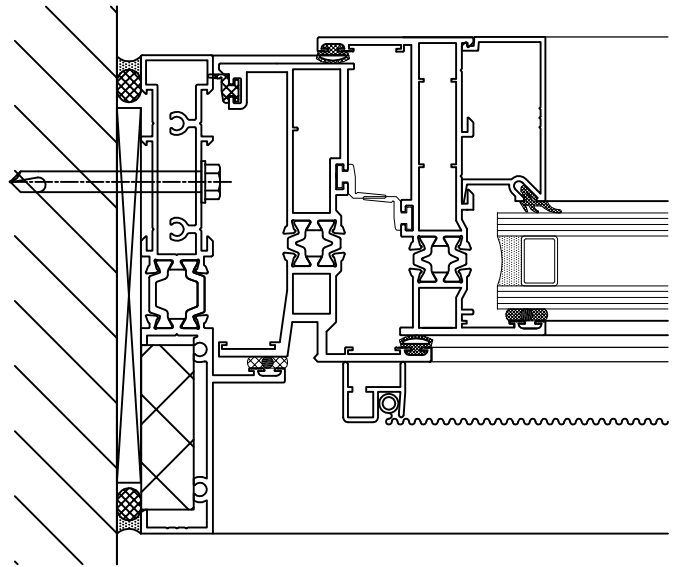
SILL



10

FIXED

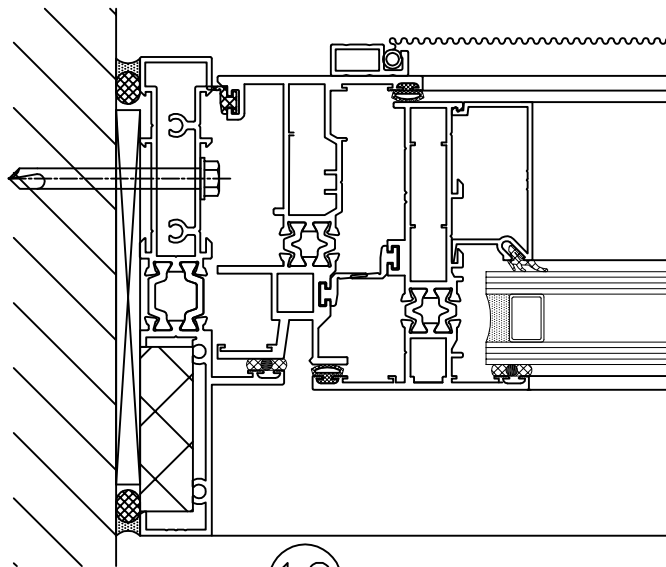
JAMB



11

OPEN IN
VENT

JAMB



12

OPEN OUT
VENT

JAMB