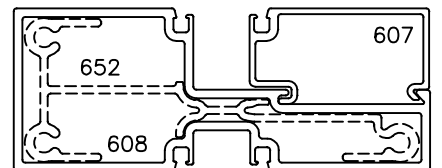
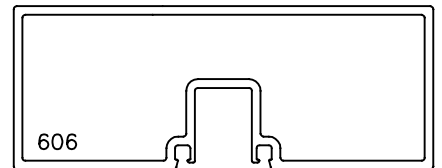
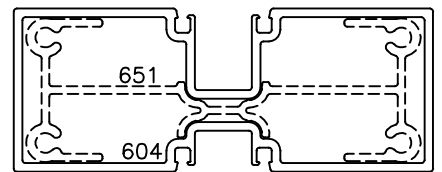
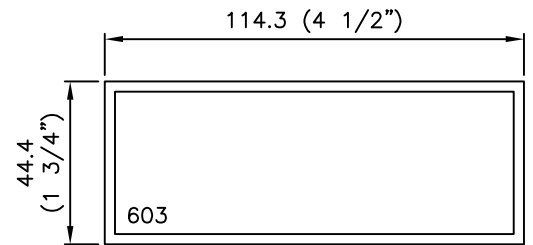
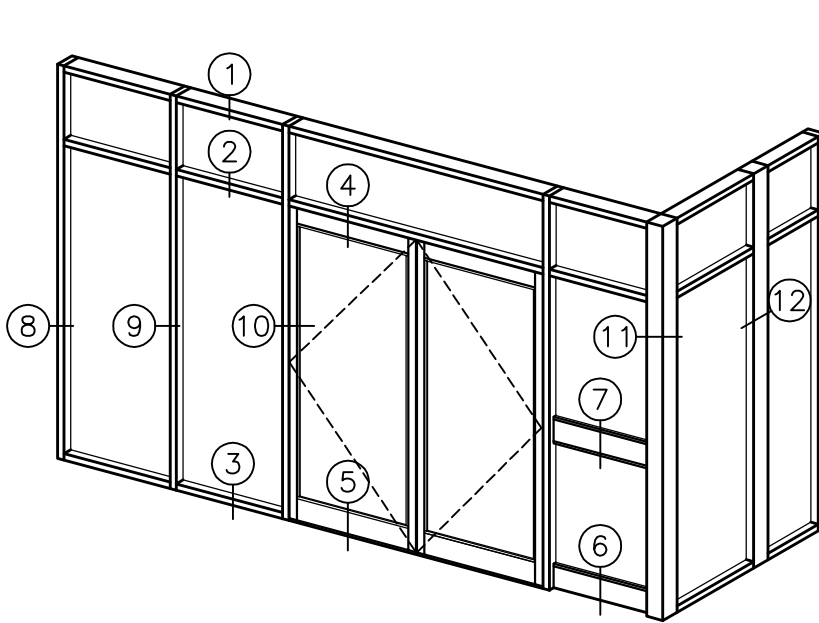




FLUSH GLAZED
FRAMING

SERIES 60



DESCRIPTION

EXTRUSION SIZES:

- 114.3mm x 114.3mm (4 1/2" x 4 1/2")
- 44.5mm x 114.3mm (1 3/4" x 4 1/2")

ALUMINUM:

6063-T5 alloy and temper

ANODIZED:

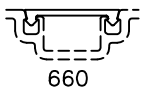
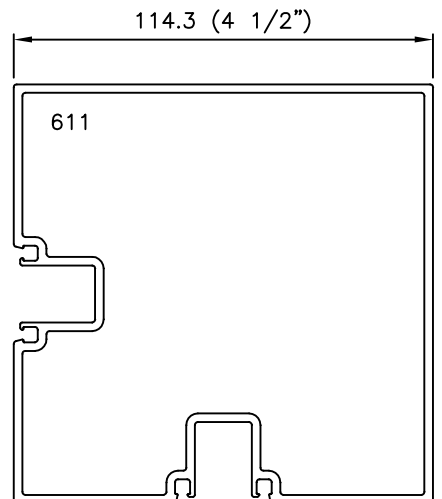
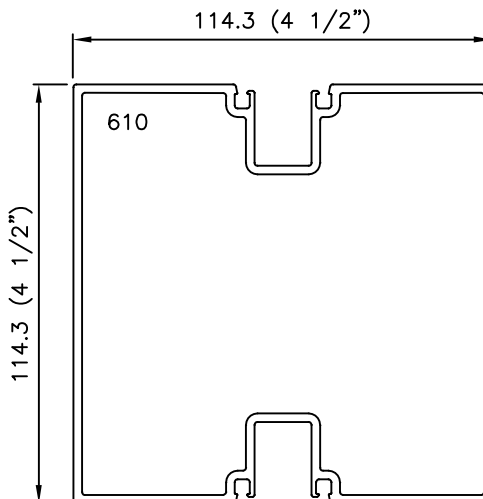
- Clear anodized
- Champagne anodized
- Light bronze anodized
- Architectural bronze anodized
- Black anodized

ARCHITECTURAL COATING:

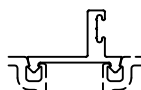
P.P.G. duracron, duranar and duranar XL paint

GLAZING VINYL:

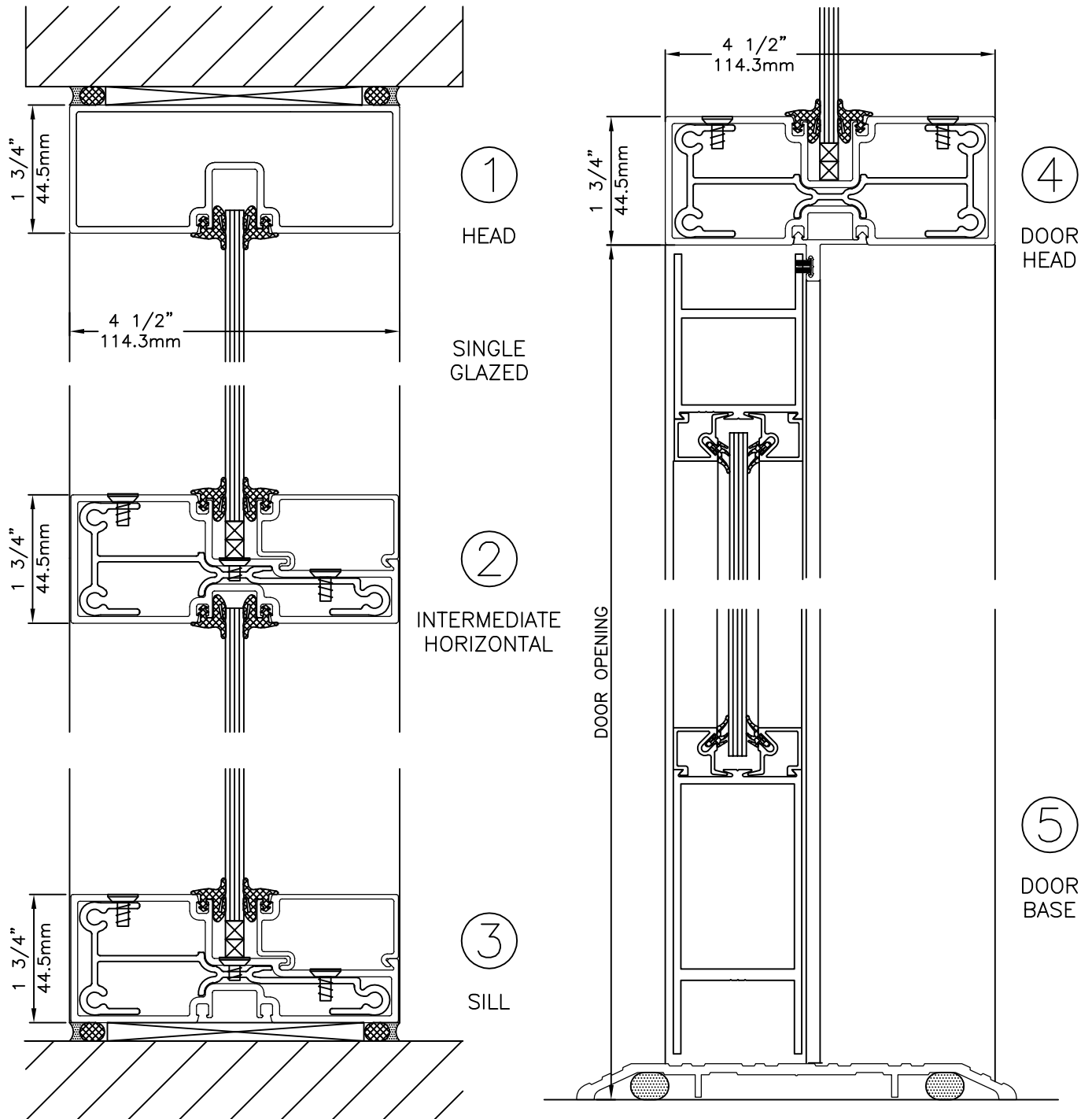
Dry glazing retained by the snap on glass stops

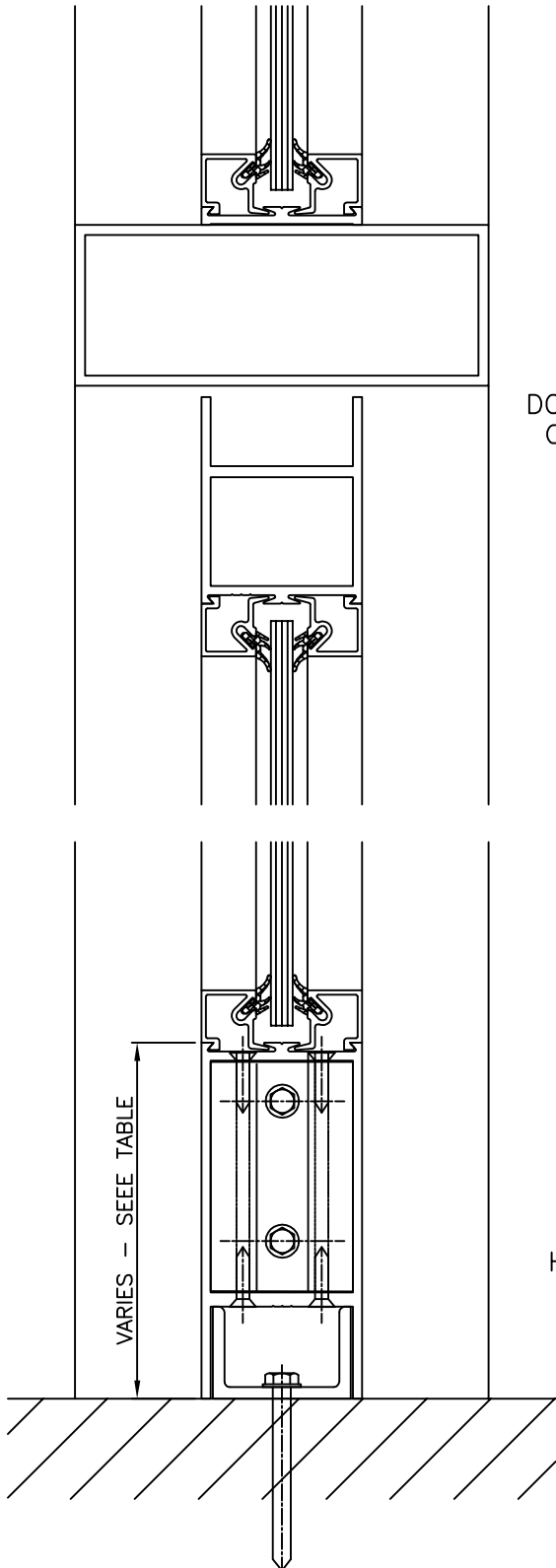


POCKET FILLER



DOOR STOP





4B

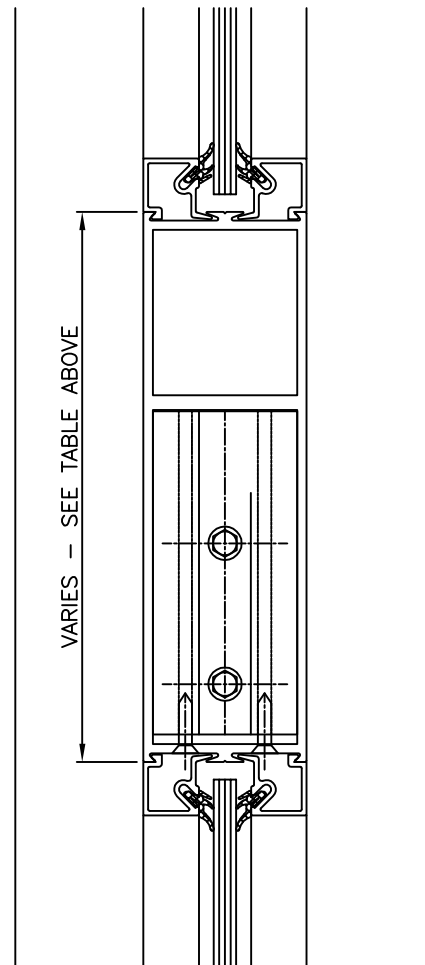
ALTERNATE
DOOR HEAD FOR
CENTER HUNG
DOORS

6

SIDLIGHT
HORIZONTAL
BASE

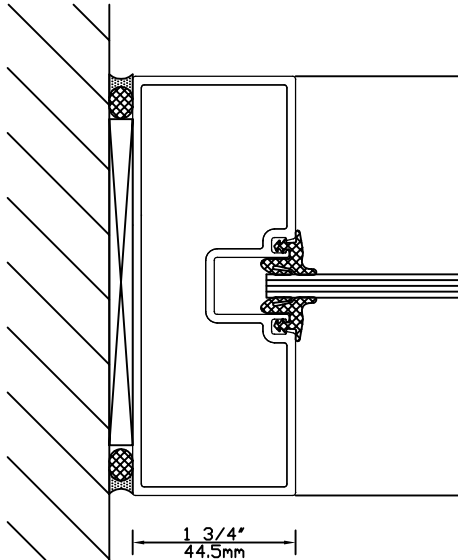
OPTIONAL SIDELITE BASE:
98.4mm (3 7/8")
149.2mm (5 7/8")
209.6mm (8 1/2")
261.9mm (10 5/16")
305mm (12")

OPTIONAL SIDELITE DIVISION RAIL:
44.5mm (1 3/4")
149.2mm (5 7/8")
214.3mm (8 1/2")
266.7mm (10 1/2")
309.6mm (12 3/16")



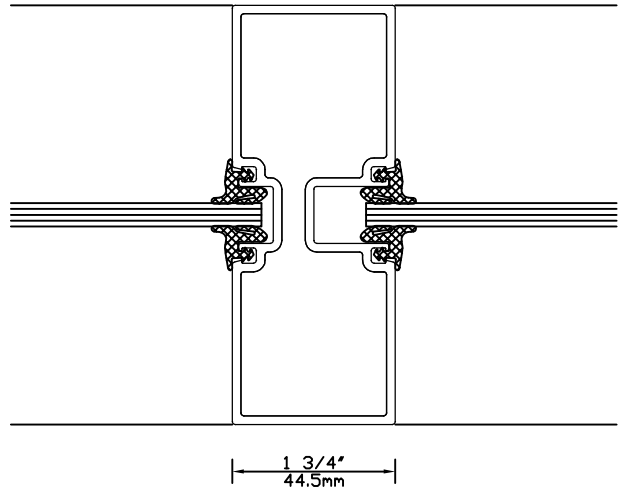
7

SIDLITE
HORIZONTAL
DIVISION RAIL



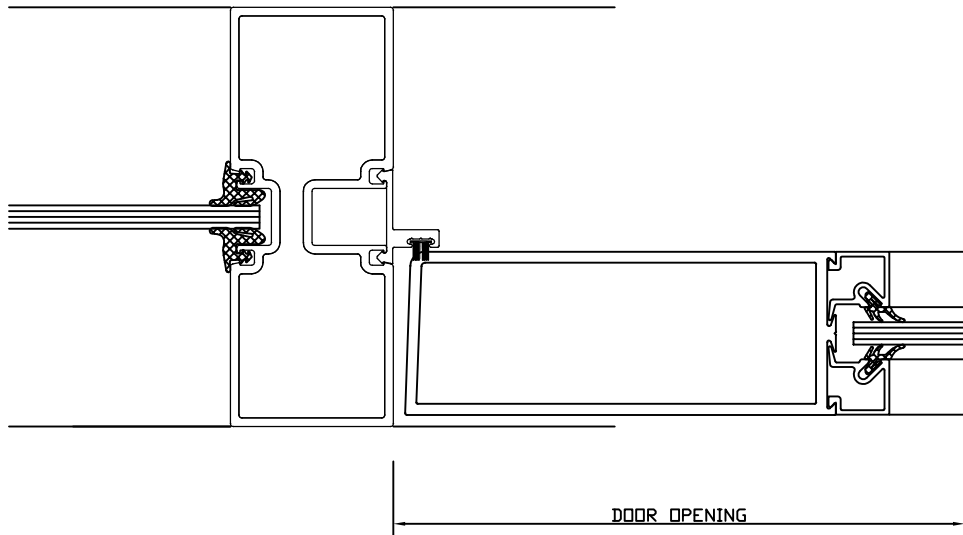
8

JAMB



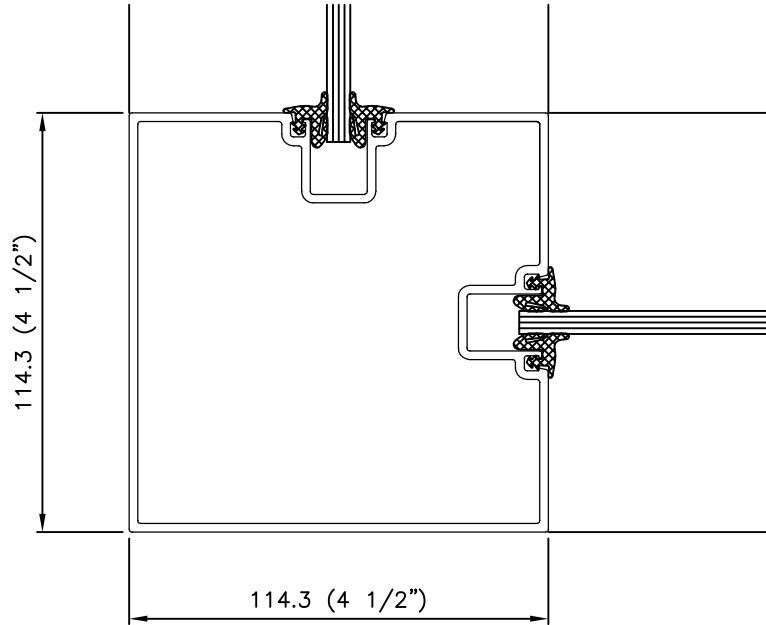
9

INTERMEDIATE
VERTICAL



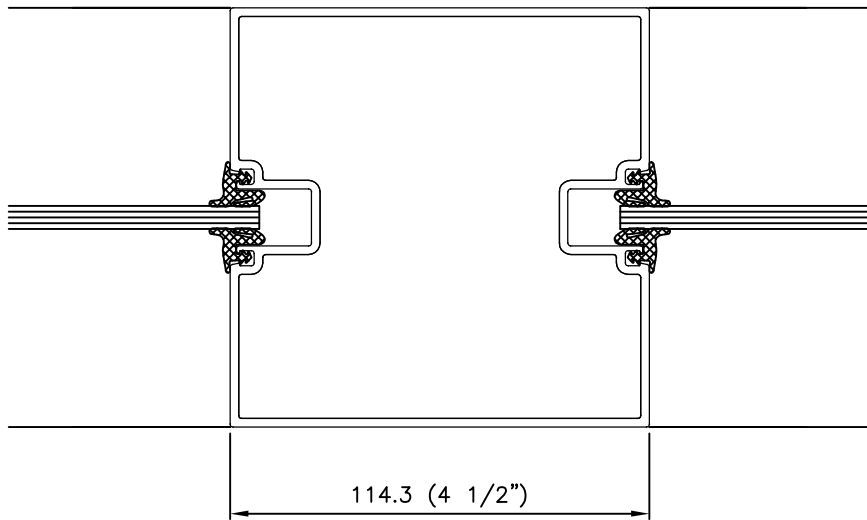
10

DOOR JAMB




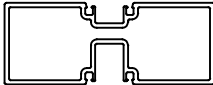
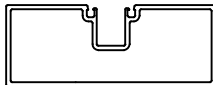
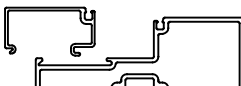

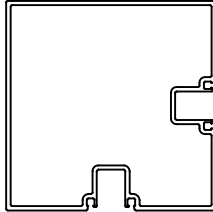
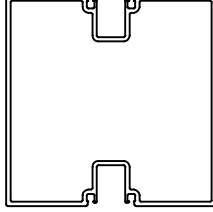
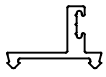
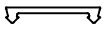
11




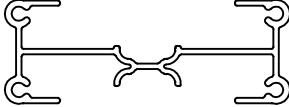
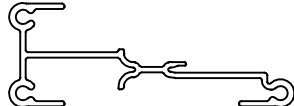

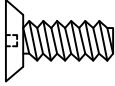
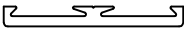


90° CORNER
POST



12

180° POST

PART	PART NO.	DESCRIPTION
	603	45mm x 114mm frame (1 3/4" x 4 1/2")
	604	45mm x 114mm mullion (1 3/4" x 4 1/2") for flush glazing
	606	45mm x 114mm closed back frame for flush glazing (1 3/4" x 4 1/2")
	607	Snap in glass stop
	608	Sill for horizontal frame member
	610	114mm x 114mm 90° corner mullion (4 1/2" x 4 1/2")
	611	114mm x 114mm 180° POST (4 1/2" x 4 1/2")
	660	Slides into glazing pocket to make flush surface on frame
	662	Slides into glazing pocket to serve as door stop for 1 3/4" door

PART	PART NO.	DESCRIPTION
	60-W	0.1875" EPDM glazing spline (TREMCO)
	S-1006	PB 8340-187 (SCHLEGEL) between pairs of doors
	S-1008	FS 7530-270 (SCHLEGEL) #662 door stops
	651	1" assembly brackets for #604 & #606
	652	1" assembly brackets for #607 & #608
	2415	#8 x 1 1/2" PST zinc plated assembly bracket screw
	2332	#12 - 24 x 1/2" FHUC MS zinc plated frame assembly screw
	210	bead base
	201	snap in single glass stop
	202	snap in thermo glass stop