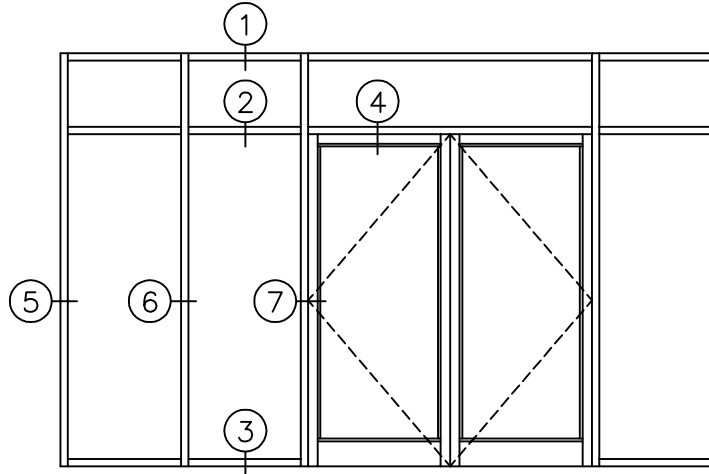




THERMALLY BROKEN FLUSH
GLAZED FRAMING SERIES 60i



DESCRIPTION

EXTRUSION SIZES:
50.8mm x 127mm (2" x 5")

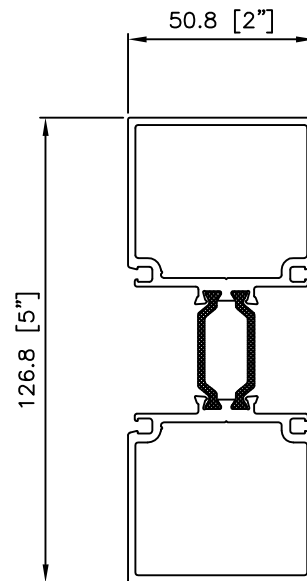
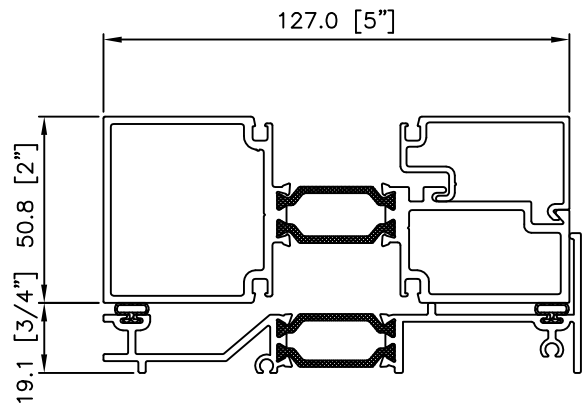
ALUMINUM:
6063-T5 alloy and temper

ANODIZED:
Clear anodized
Champagne anodized
Light bronze anodized
Architectural gronze
Black anodized

ARCHITECTURAL COATING:
P.P.G. duracron, duranar
& duranar XL paint

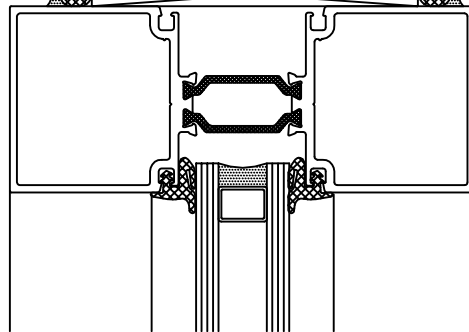
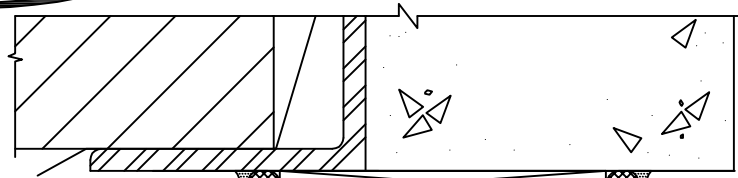
GLAZING VINYL:
Dry glazing retained by the snap-in
glass stops.

Joints secured with concealed brackets to
obtain strong corners and fine hairline
joints. Exposed screws to be flat head
counter-sunk type of colour to match
aluminum finish.

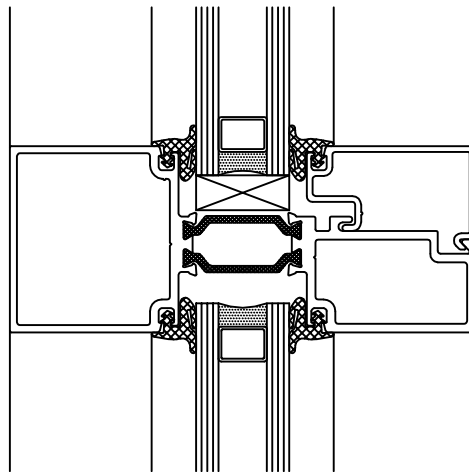




THERMALLY BROKEN FLUSH
GLAZED FRAMING SERIES 60i

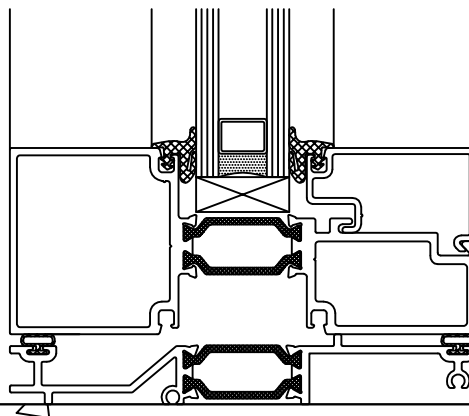


1
HEAD



INTERMEDIATE
HORIZONTAL

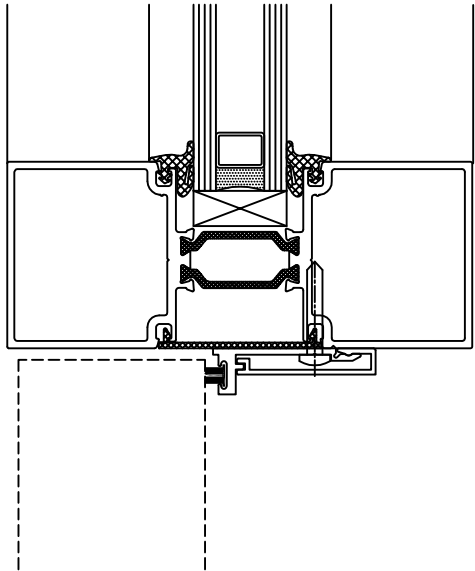
2



SILL

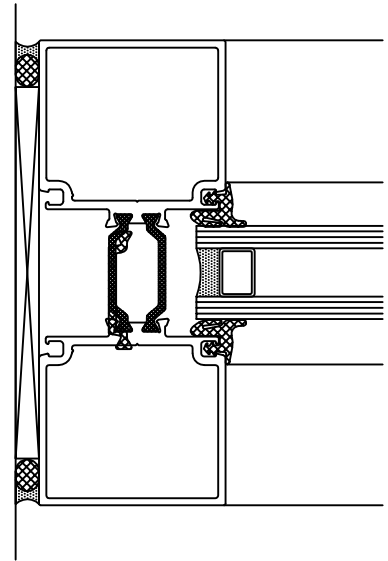
3





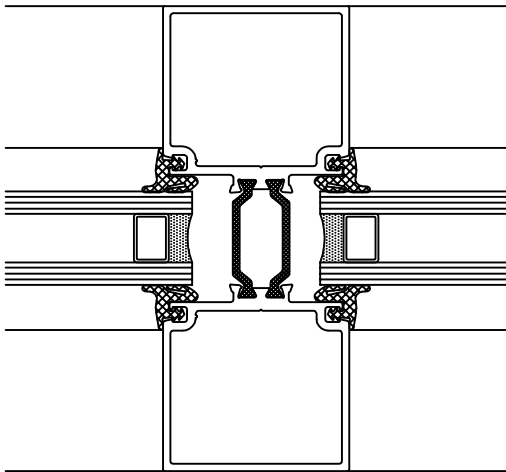
INTERMEDIATE
HORIZONTAL
⊙ DOOR HEADER

4



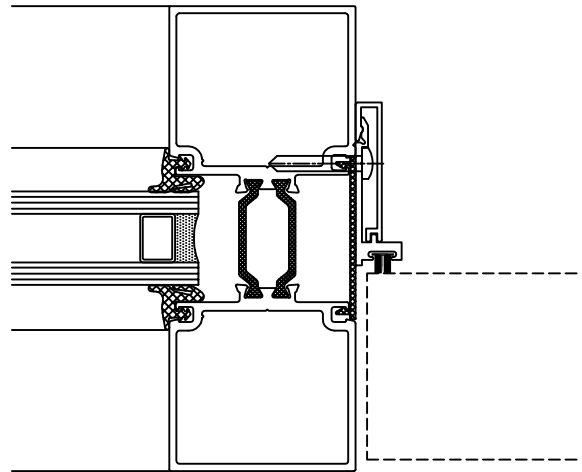
VERTICAL
⊙ JAMB

5



INTERMEDIATE
VERTICAL

6



VERTICAL
⊙ DOOR JAMB

7



THERMALLY BROKEN
FLUSH GLAZED FRAMING

SERIES 60i

PART	PART NO.	DESCRIPTION
	60i-1	51mm x 127mm frame (2" x 5")
	60i-2	Snap in glass stop Base for horizontal frame member
	60i-S	Sub-sill for 60i framing
	3215 3216	Two piece door stop & snap on cap
	3215A 3216A	Two piece door stop & snap on cap (higher blade used with continuous hinge)
	60i-W	0.1875" EPDM glazing spline (TREMCO)
	V-1004	0.125" EPDM weather seal (SCHLEGEL) for series 60i drip pan