



CURTAIN WALL
ELEVATION

SERIES 3300

DESCRIPTION

EXTRUSION SIZES:
50.8mm X 101.6mm
(2" X 4")

ALUMINUM:
6063-T5 alloy and temper

ANODIZED:
Clear anodized
Champagne anodized
Light bronze anodized
Architectural bronze anodized
Black anodized

ARCHITECTURAL COATING:
P.P.G. duracron, duranar and
duranar XL paint

HARDWARE:
Choose as required from
window hardware.

GLASS STOPS:
Square caps, snap on type.

GLAZING:
Glazed from exterior.
Dry glazing exterior, wet interior.
Double glazed.

DESIGN:
Designed based on the "Rain Screen
Principle".

Gaskets, sleeved spigotted joints and
seals to ensure no rainwater entry
into the cavities of the system.

DESIGN CONT'D:
Air and vapour seals to limit air
infiltration and air/vapour exfiltration
into the cavities of the system.

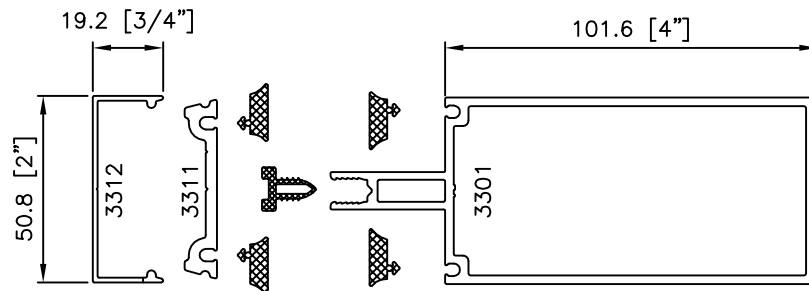
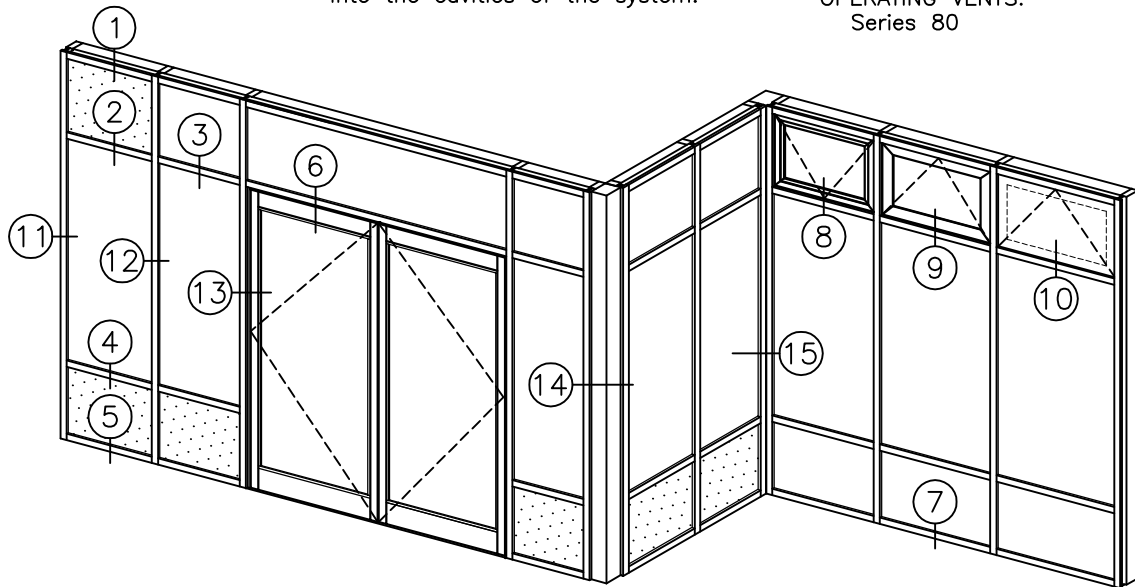
SPANDREL PANELS:
Face: 6mm (1/4") glass as selected
by designer.

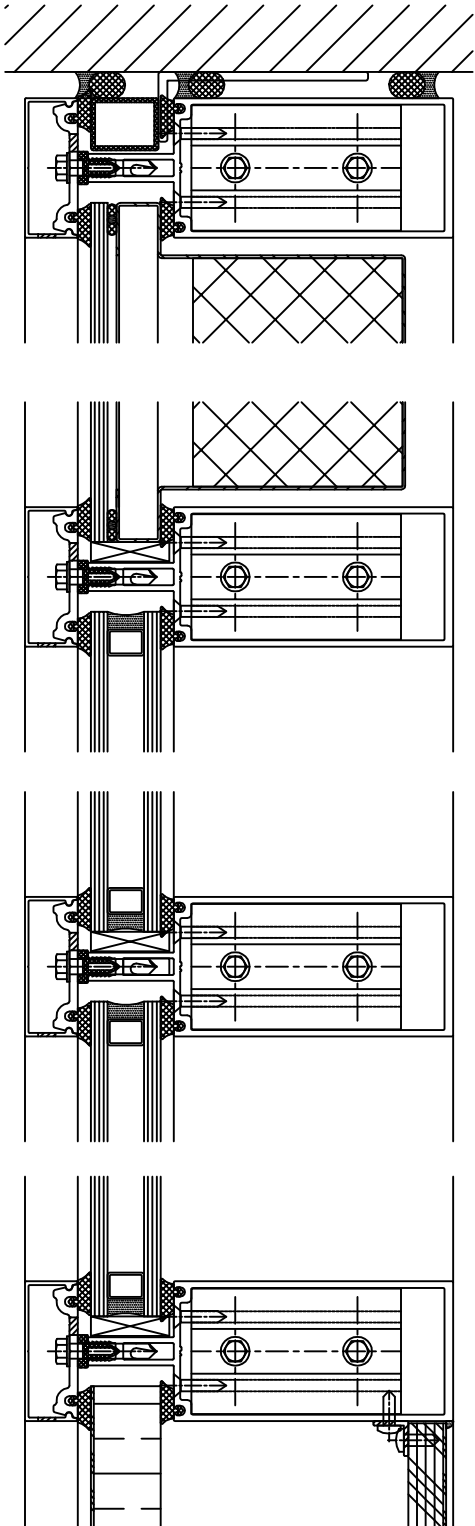
Back up panel: 22 gauge galvanized
steel or as selected by designer.

Insulation: As selected by designer
to suit application.

Joints caulked with high grade
butyl sealant.

OPERATING VENTS:
Series 80





1

HEAD

SPANDREL
PANEL

2

INTERMEDIATE
HORIZONTAL

VISION

3

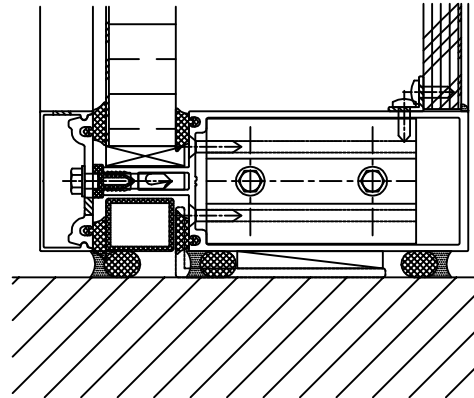
INTERMEDIATE
HORIZONTAL

VISION

4

INTERMEDIATE
HORIZONTAL

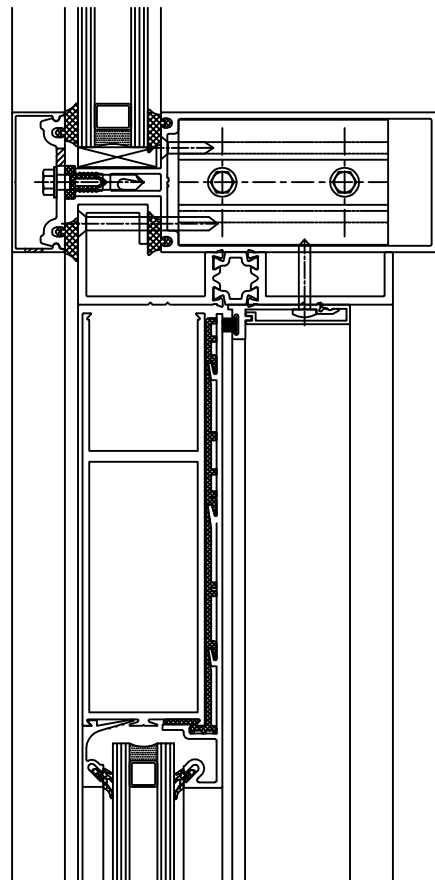
PANEL



PANEL

5

SILL



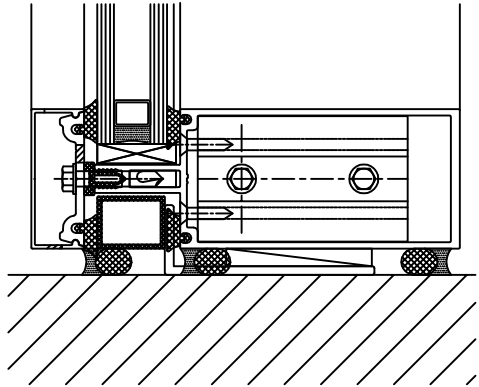
6

DOOR HEAD



CURTAIN WALL
DETAILS

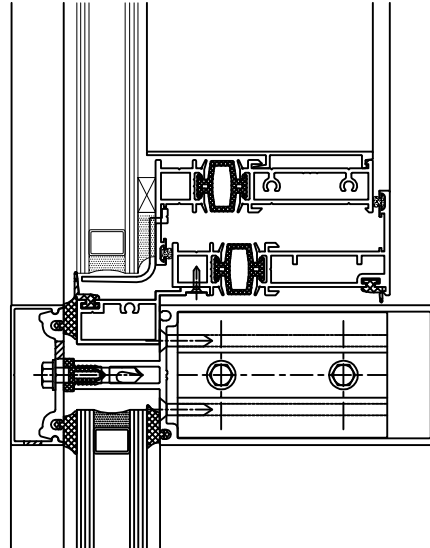
SERIES 3300



VISION

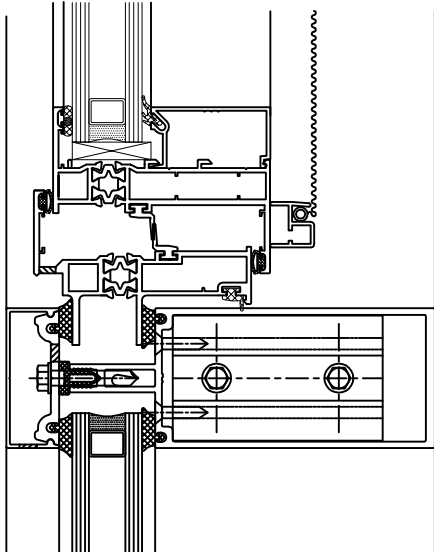
7

SILL



10

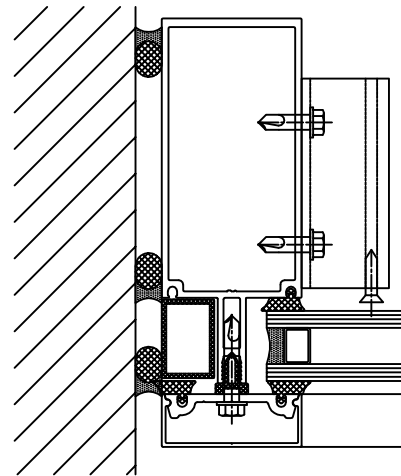
SERIES 80
S.S.G OPEN
OUT VENT



VISION

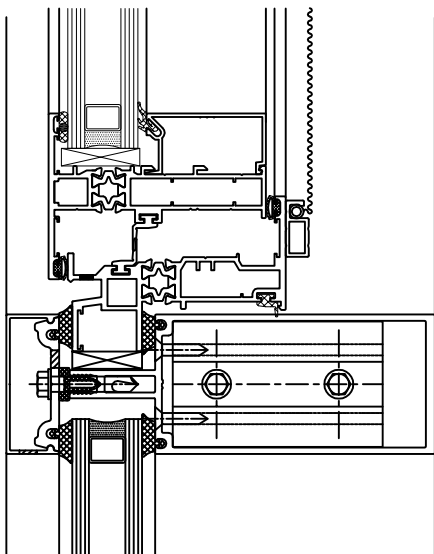
8

SERIES 80
OPEN IN
VENT



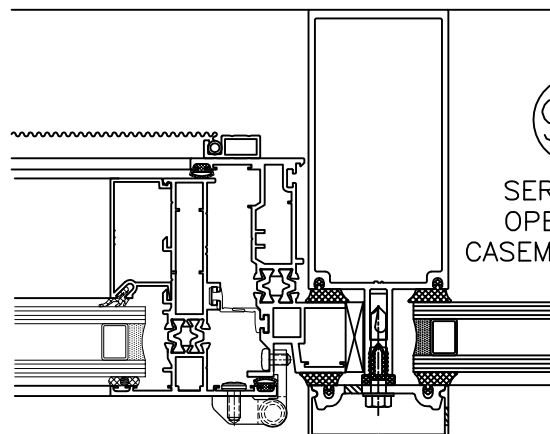
11

JAMB



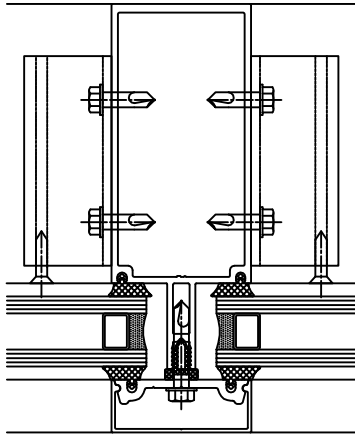
9

SERIES 80
OPEN OUT
VENT



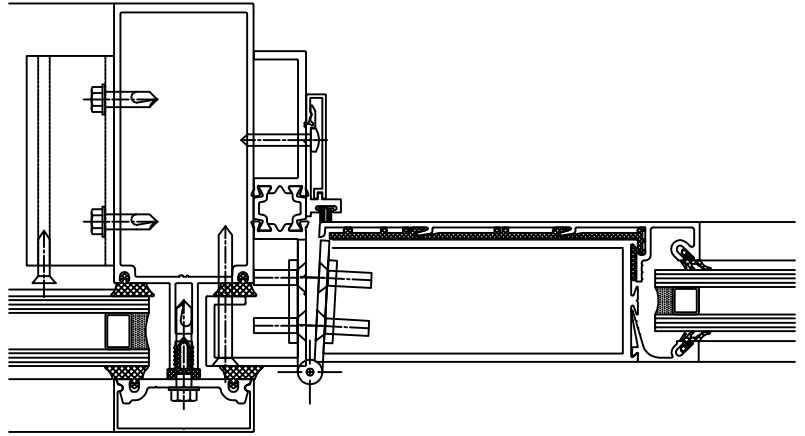
9A

SERIES 80
OPEN OUT
CASEMENT VENT



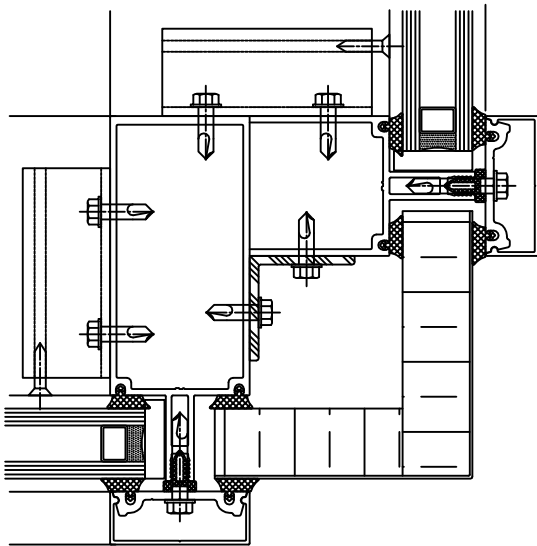
12

INTERMEDIATE
VERTICAL



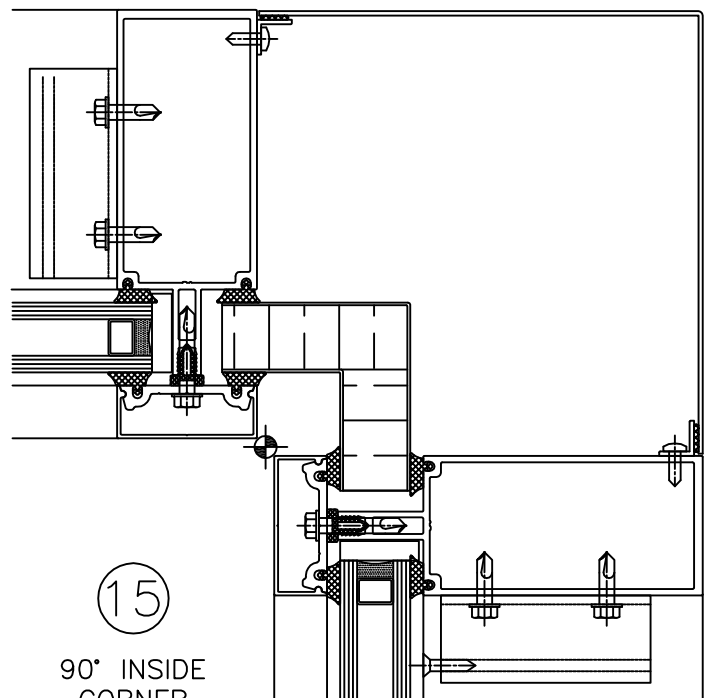
13

THERMALLY
BROKEN
DOOR JAMB



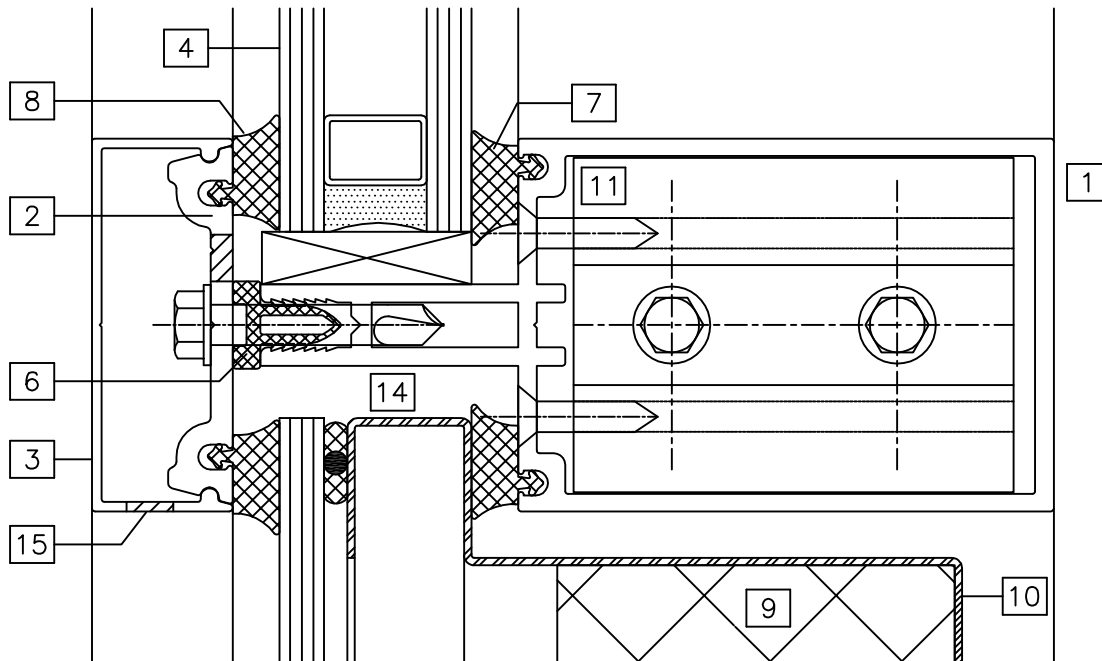
14

90° OUTSIDE
CORNER

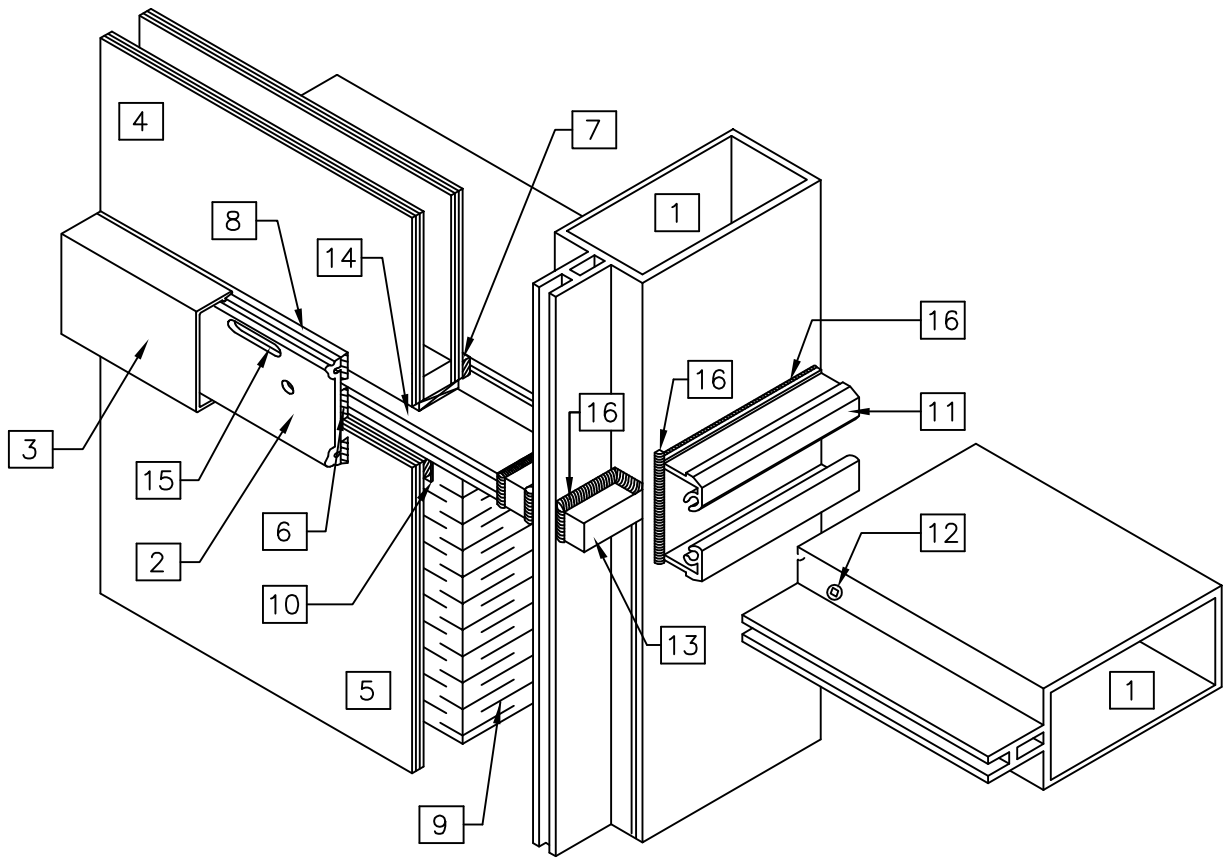


15


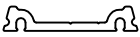


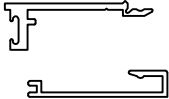
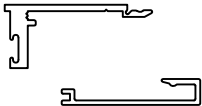


90° INSIDE
CORNER



- [1] 2" x 4" CURTAIN WALL BACK-SECTION (PART#3302)
- [2] PRESSURE PLATE (PART#3311), ANCHORED @ 6" O.C. W/ #10-16 x 1 1/4" TEK SCREW
- [3] 2" x 3/4" SNAP ON CAP (PART #3312)
- [4] THERMAL UNITS
- [5] SPANDREL GLAZING
- [6] PVC THERMAL BREAK (PART# C-1002)
- [7] EPDM GLAZING SPLINE, INTERIOR PRIMARY WEATHER SEAL (PART #C-1010)
- [8] EPDM GLAZING SPLINE, EXTERIOR SECONDARY WEATHER SEAL (PART #C-1010)
- [9] AF530 SEMI-RIGID INSULATION
- [10] 22 GAUGE GALVANIZED STEEL BACKPAN
- [11] SHEARBLOCK (PART #3351), ANCHORED WITH 2 - #10-16 x 3/4" TEK SCREWS
- [12] #10 x 1" ASSEMBLY SCREW (PART #2312)
- [13] PVC CORNER PLUG (PART #3012)
- [14] PRESSURE EQUALIZED AIR CHAMBER
- [15] DRAINAGE HOLES
- [16] CONTINUOUS CAULKING AT JOINTS



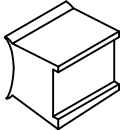

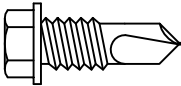

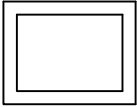
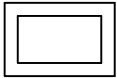
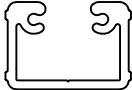

ISOMETRIC VIEW OF JUNCTION BETWEEN
HORIZONTAL & VERTICAL MEMBERS

PART	PART NO.	DESCRIPTION
	3301	50.8mm x 101.6mm horizontal and vertical mullion (2" x 4")
	3311	Pressure plate
	3312	50.8mm x 19mm (2" x 3/4") snap-on cap
	3021	Thermally broken door adapter for curtain wall framing
	3215 3216	two piece door stop & snap on cap
	3215A 3216	two piece door stop & snap on cap (Extended fin for continuous hinges)
	C-1009	EPDM weatherseal for 3300 series curtain wall
	C-1012	Thermal break 3300 series



CURTAIN WALL
PARTS LIST

SERIES 3300

PART	PART NO.	DESCRIPTION
	3012	Corner plug
	2312	# 8 x 1" zinc plated F.S.T. screw for shearblock – 2 per shearblock
	2411	#10 – 16 x 3/4" no corrode Tek screw for shearblock – 2 per shearblock
	2524	#10 – 16 x 1 1/4" no corrode Tek screw for pressure plate for series 3200 c. wall
	3015	1 1/8" x 3/4" rigid PVC pocket filler
	3016	1" x 5/8" rigid PVC pocket filler
	3351	Shearblocks for mullions
	AF1020	25 x 51 x 3mm aluminum anchor angle (1 x 2 x 1/8")