



CURTAIN WALL
ELEVATION

SERIES 3200

DESCRIPTION

EXTRUSION SIZE:
44.5mm X 92mm
(1 3/4" X 3 5/8")

ALUMINUM:
6063-T5 alloy and temper

ANODIZED:
Clear anodized
Champagne anodized
Light bronze anodized
Architectural bronze anodized
Black anodized

ARCHITECTURAL COATING:
P.P.G. duracron, duranar and
duranar XL paint

HARDWARE:
Choose as required from
window hardware.

GLASS STOPS:
Square caps, snap on type.

GLAZING:
Glazed from exterior.
Dry glazing exterior, wet interior.
Double glazed.

DESIGN:
Designed based on the "Rain Screen
Principle".

Gaskets, sleeved spigotted joints and
seals to ensure no rainwater entry
into the cavities of the system.

DESIGN CONT'D:
Air and vapour seals to limit air
infiltration and air/vapour exfiltration
into the cavities of the system.

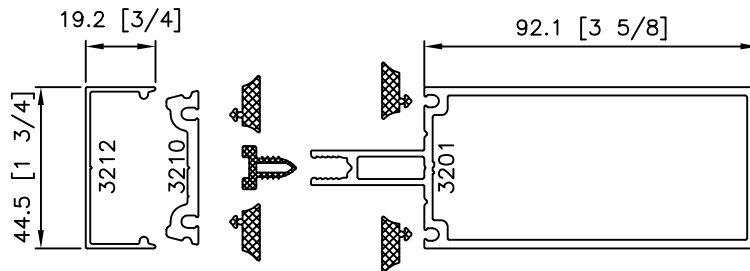
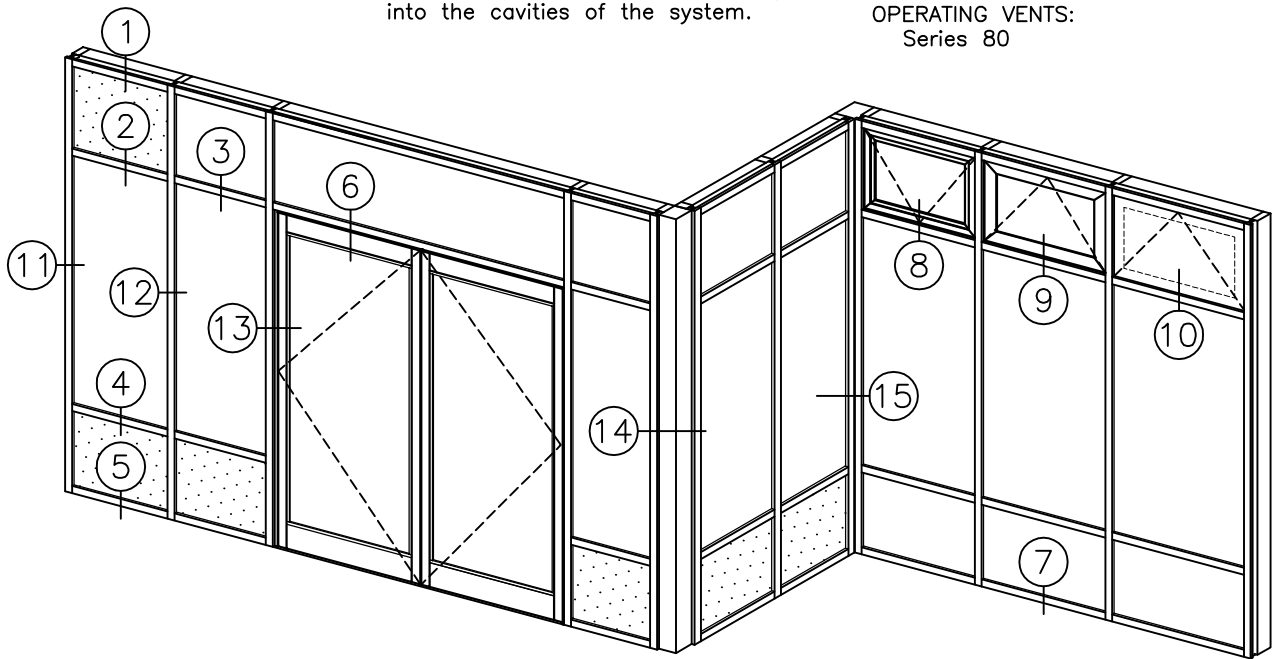
SPANDREL PANELS:
Face: 6mm (1/4") glass as selected
by designer.

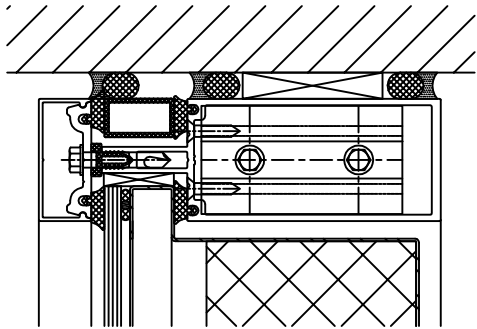
Back up panel: 22 gauge galvanized
steel or as selected by designer.

Insulation: As selected by designer
to suit application.

Joints caulked with high grade
butyl sealant.

OPERATING VENTS:
Series 80

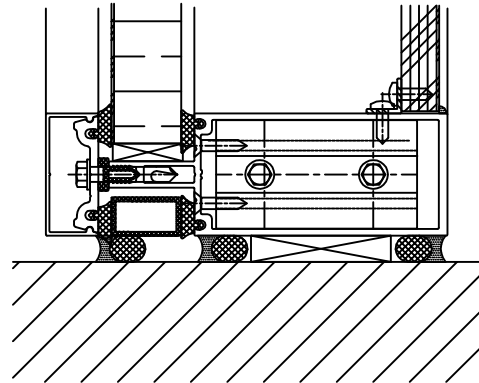




1

HEAD

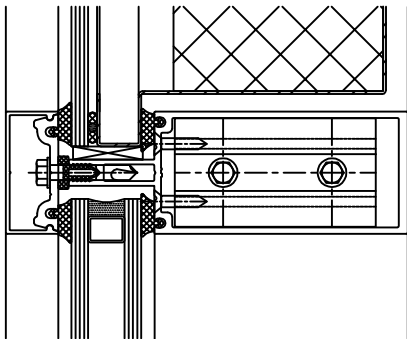
SPANDREL
PANEL



PANEL

5

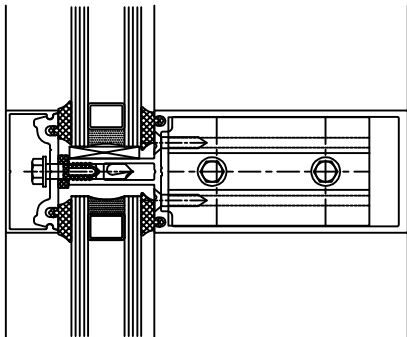
SILL



2

INTERMEDIATE
HORIZONTAL

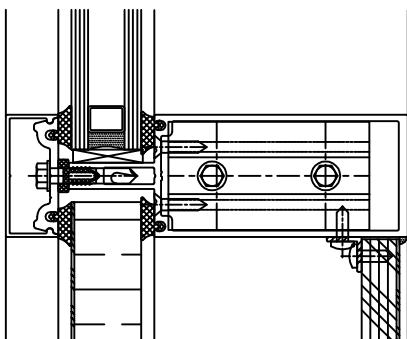
VISION



3

INTERMEDIATE
HORIZONTAL

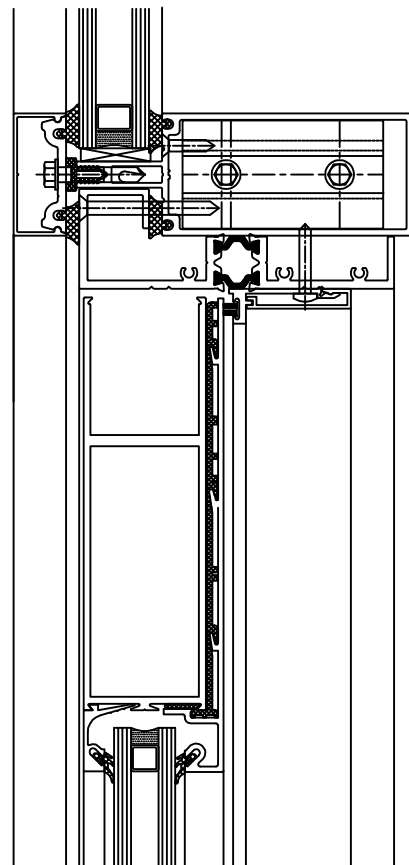
VISION



4

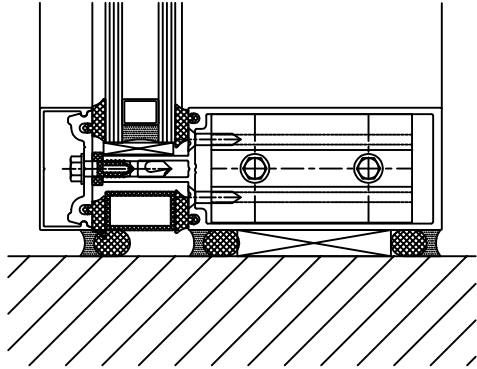
INTERMEDIATE
HORIZONTAL

PANEL



6

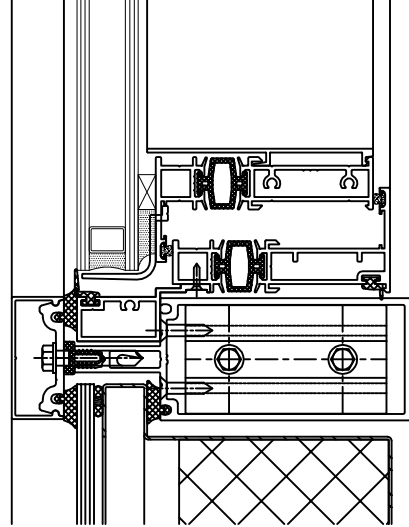
DOOR HEAD



VISION

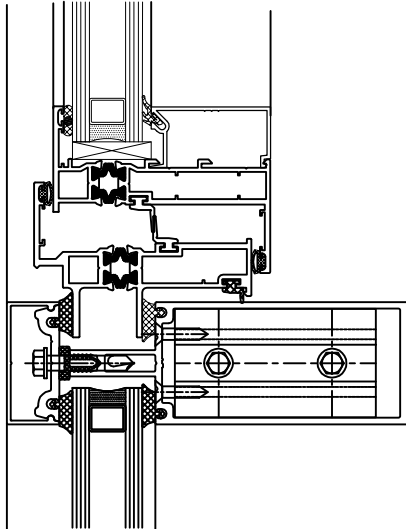
7

SILL



10

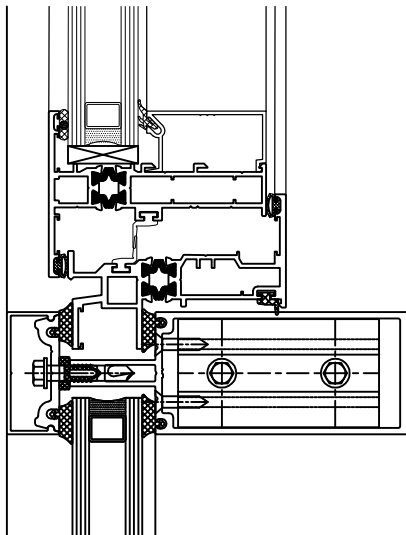
SERIES 80
S.S.G OPEN
OUT VENT



VISION

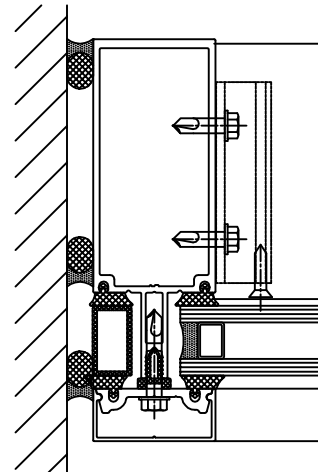
8

SERIES 80
OPEN IN
VENT



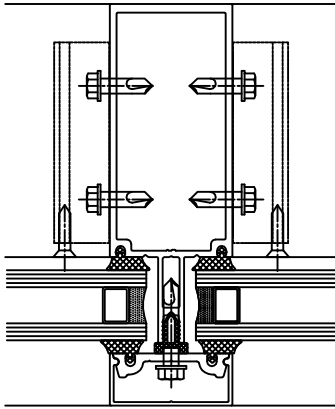
9

SERIES 80
OPEN OUT
VENT



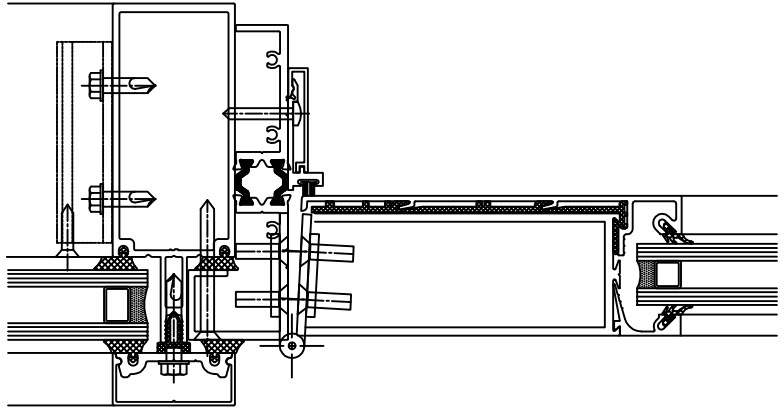
11

JAMB



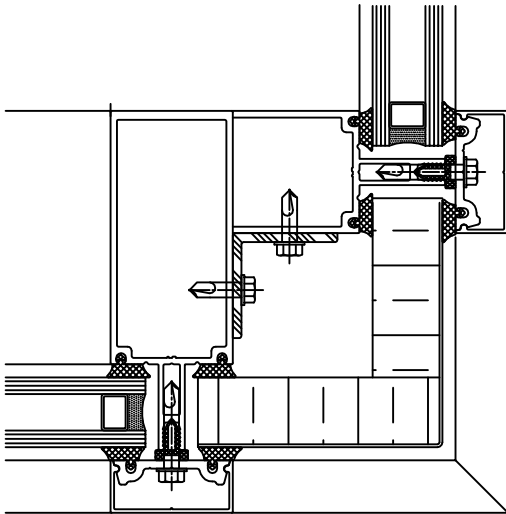
12

INTERMEDIATE
VERTICAL



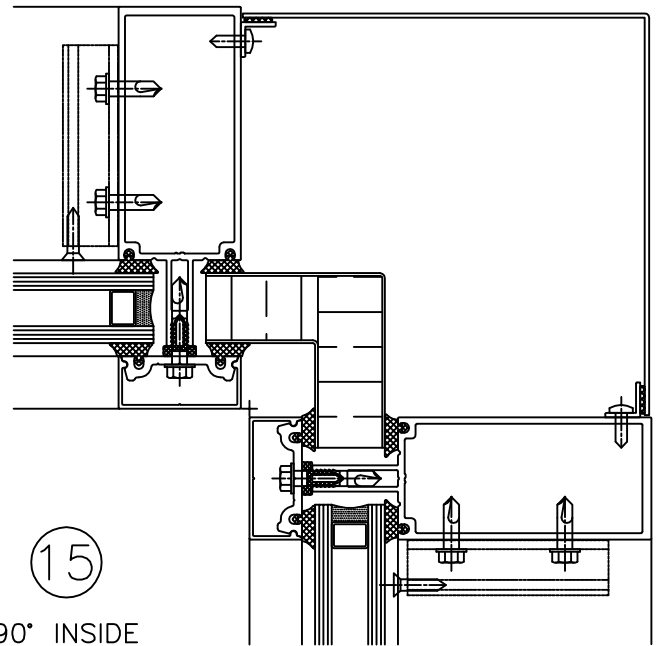
13

THERMALLY
BROKEN
DOOR JAMB



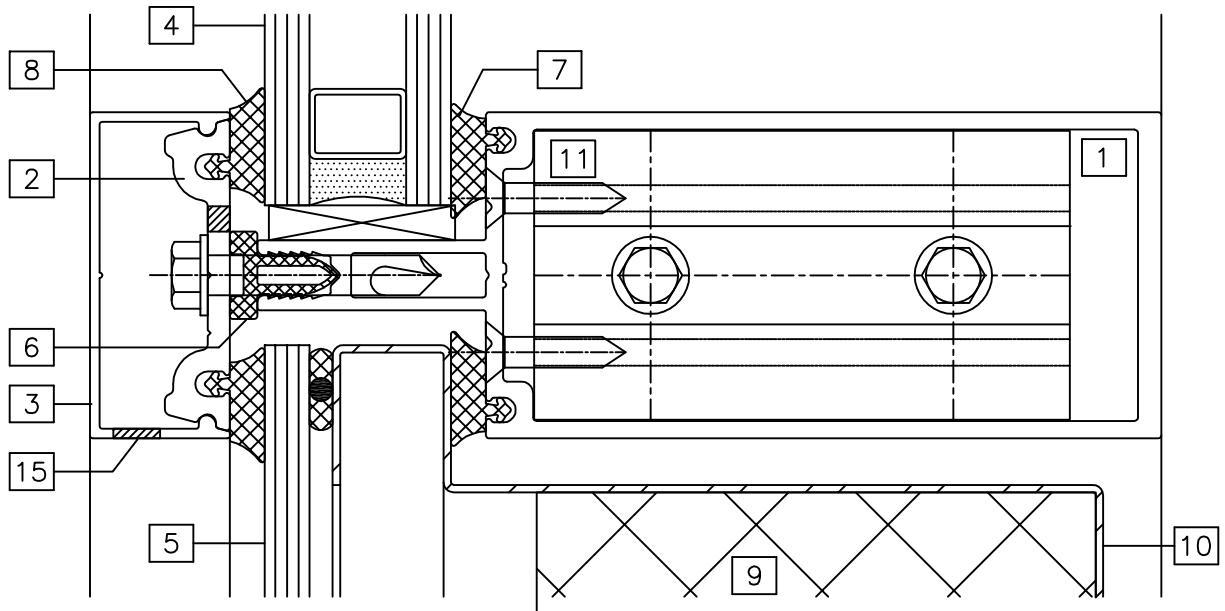
14

90° OUTSIDE
CORNER

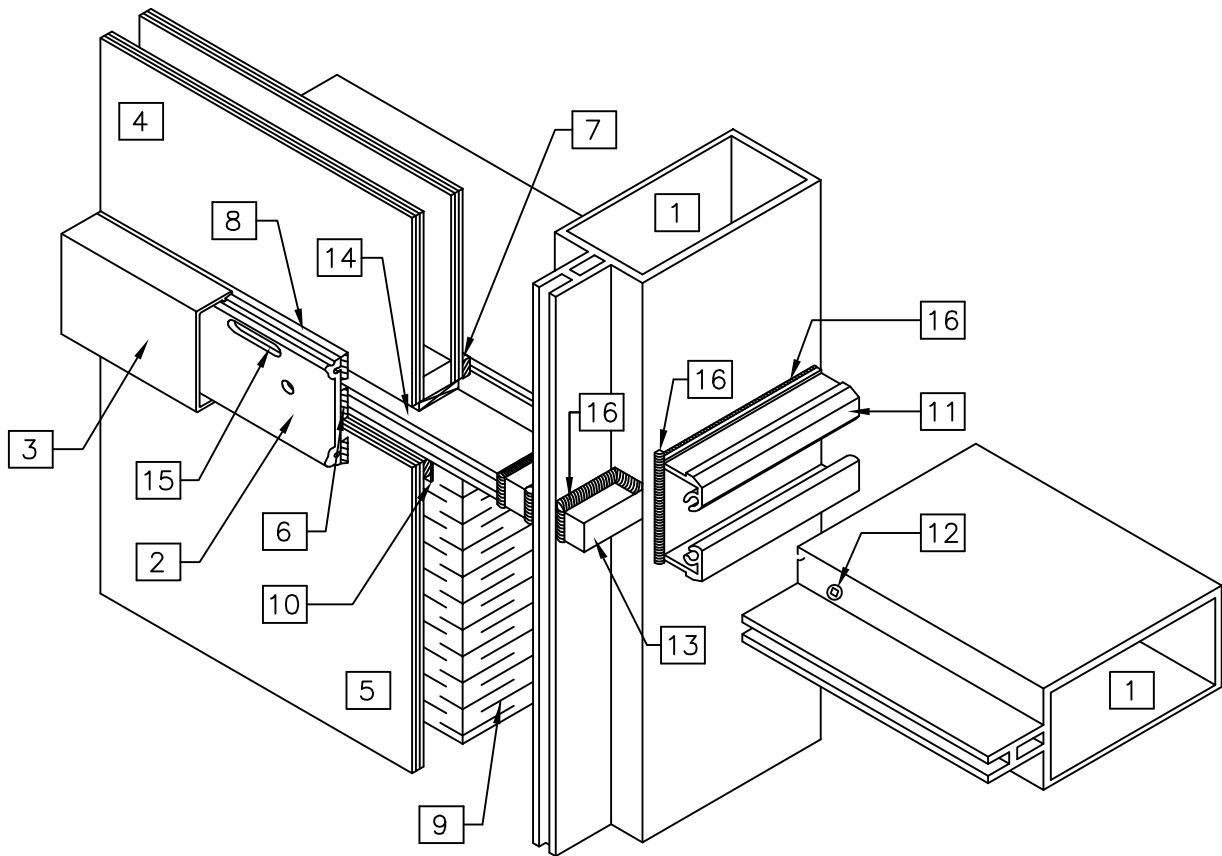


15


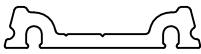
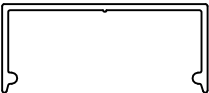

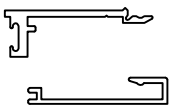
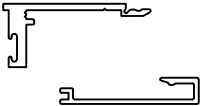


90° INSIDE
CORNER

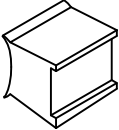

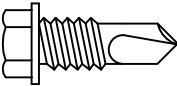

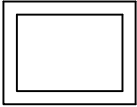
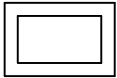
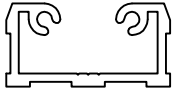
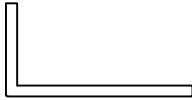


- 1 1 3/4" x 3 5/8" CURTAIN WALL BACK-SECTION (PART #3201)
- 2 PRESSURE PLATE (PART#3210), ANCHORED @ 6" O.C. W/ #10x1 1/4" SCREW (PART#2524)
- 3 1 3/4" x 3/4" SNAP ON CAP (PART #3212)
- 4 THERMAL UNITS
- 5 SPANDREL GLAZING
- 6 PVC THERMAL BREAK (PART# C-1002)
- 7 EPDM GLAZING SPLINE (INTERIOR PRIMARY SEAL) (PART #C-1009)
- 8 EPDM GLAZING SPLINE, EXTERIOR SECONDARY WEATHER SEAL (PART #C-1009)
- 9 AF530 SEMI-RIGID INSULATION
- 10 22 GAUGE GALVANIZED STEEL BACKPAN
- 11 SHEARBLOCK (PART #3251), ANCHORED WITH 3 - #10 x 1/2" SCREW (PART #2411)
- 12 #8 x 1" ASSEMBLY SCREW (PART #2312)
- 13 PVC CORNER PLUG (PART #3012)
- 14 PRESSURE EQUALIZED AIR CHAMBER
- 15 DRAINAGE HOLES
- 16 CONTINUOUS CAULKING AT JOINTS



ISOMETRIC VIEW OF JUNCTION BETWEEN
HORIZONTAL & VERTICAL MEMBERS

PART	PART NO.	DESCRIPTION
	3201	45mm x 92mm horizontal and vertical mullion (1 3/4" x 3 5/8")
	3210	Pressure plate
	3212	45mm x 19mm (1 3/4" x 3/4") snap-on cap
	3021	Thermally broken door adapter for curtain wall framing
	3215 3216	two piece door stop & snap on cap
	3215A 3216	two piece door stop & snap on cap (Extended fin for continuous hinges)
	C-1009	EPDM weatherseal for 3200 series curtain wall
	C-1012	Thermal break 3200 series

PART	PART NO.	DESCRIPTION
	3012	Corner plug
	2312	# 8 x 1" zinc plated F.S.T. screw for shearblock – 2 per shearblock
	2411	#10 – 16 x 3/4" no corrode Tek screw for shearblock – 2 per shearblock
	2524	#10 – 16 x 1 1/4" no corrode Tek screw for pressure plate for series 3200 c. wall
	3015	1 1/8" x 3/4" rigid PVC pocket filler
	3016	1" x 5/8" rigid PVC pocket filler
	3251	Shearblocks for mullions
	AF1020	25 x 51 x 3mm aluminum anchor angle (1 x 2 x 1/8")