



DESCRIPTION

EXTRUSION SIZES:

- 44.5mm (1 3/4") thickness
- 44.5mm (1 3/4") stiles
- 57.2mm (2 1/4") top rail
- 149.2mm (5 7/8") bottom rail

OPTIONAL DIVISION RAILS:

- 44.5mm (1 3/4")

ALUMINUM:

- 6063-T5 alloy and temper

ANODIZED:

- Clear anodized
- Champagne anodized
- Light bronze anodized
- Architectural bronze anodized
- Black anodized

ARCHITECTURAL COATING:

- P.P.G. duracron, duranar and duranar XL paint

GLASS STOPS:

- No. 201 - single
- No. 202 - thermo

GLAZING VINYL:

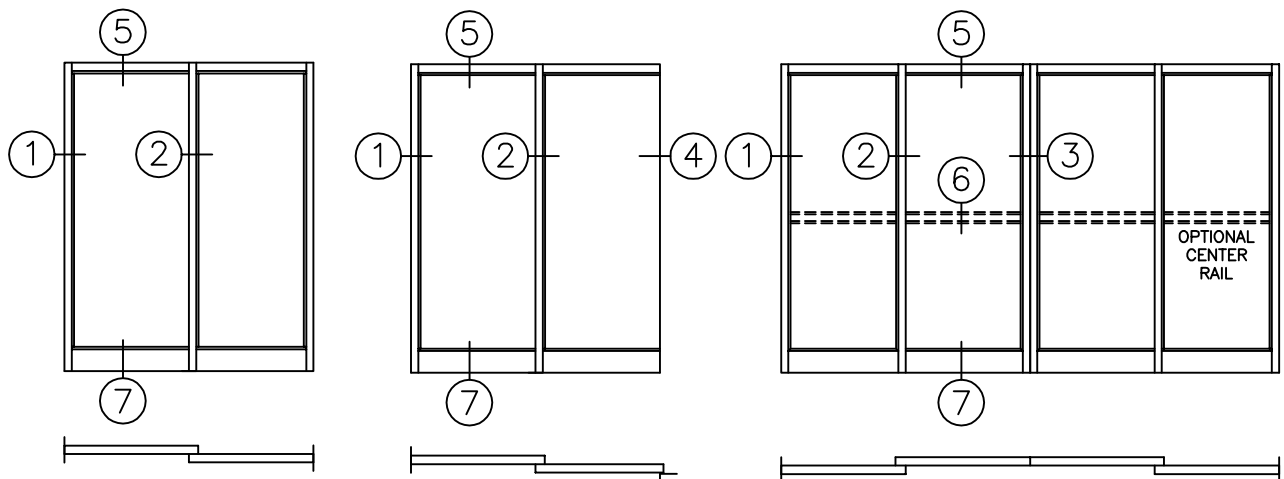
- Dry glazing retained by the snap on glass stops

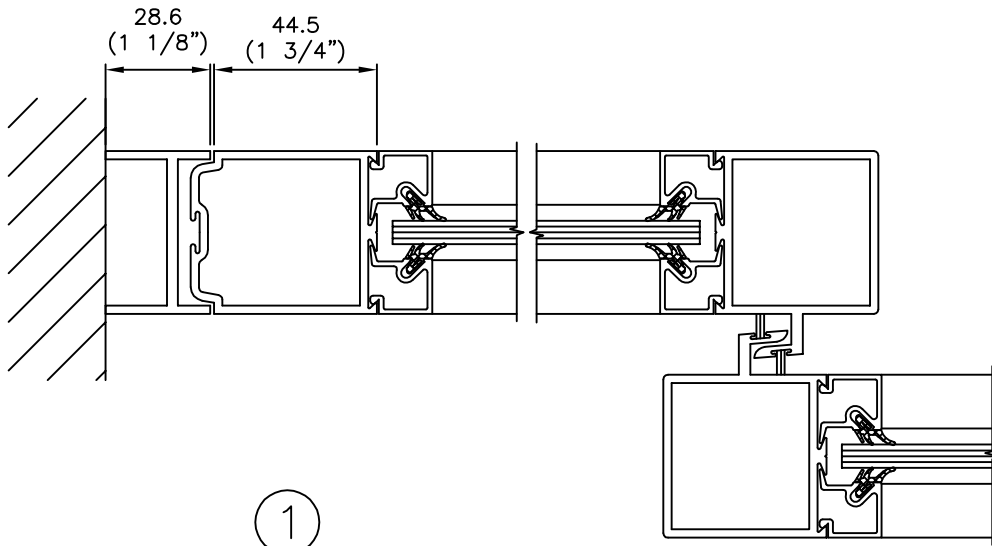
STANDARD HARDWARE:

- Two adjustable tandem ball bearing steel rollers concealed in bottom of the door.

Maximum security (hook) lock in the stile of one door.

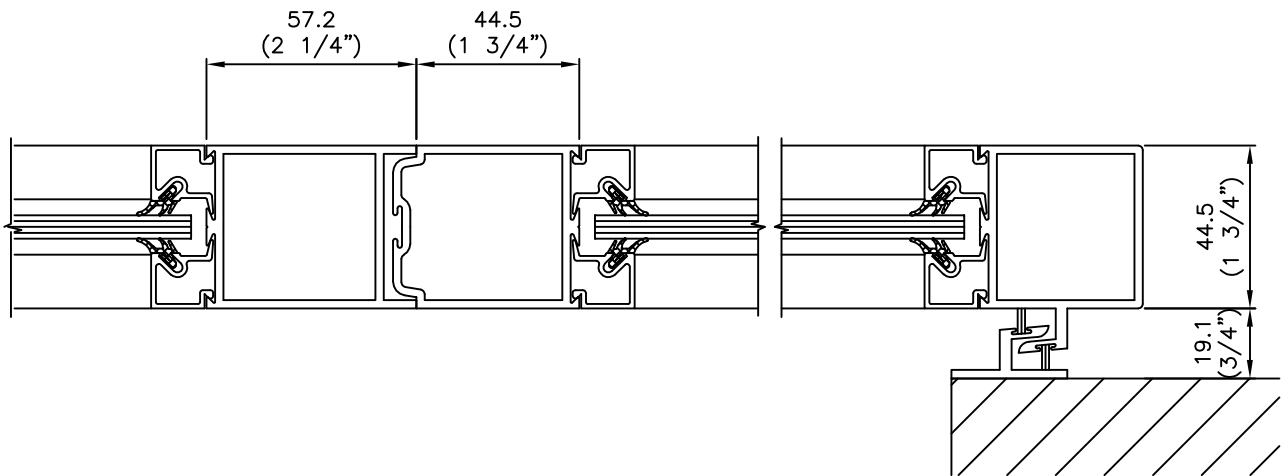
Tracks surface mounted or recessed in the floor, flush with finished floor.





1

2



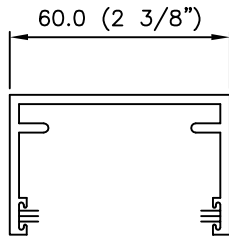
3

4



SLIDING DOORS
STANDARD

SERIES 29



TOP TRACK (DOOR GUIDE)
PART NO. 291



BOTTOM TRACK (ROLLER GUIDE)
PART NO. 292

